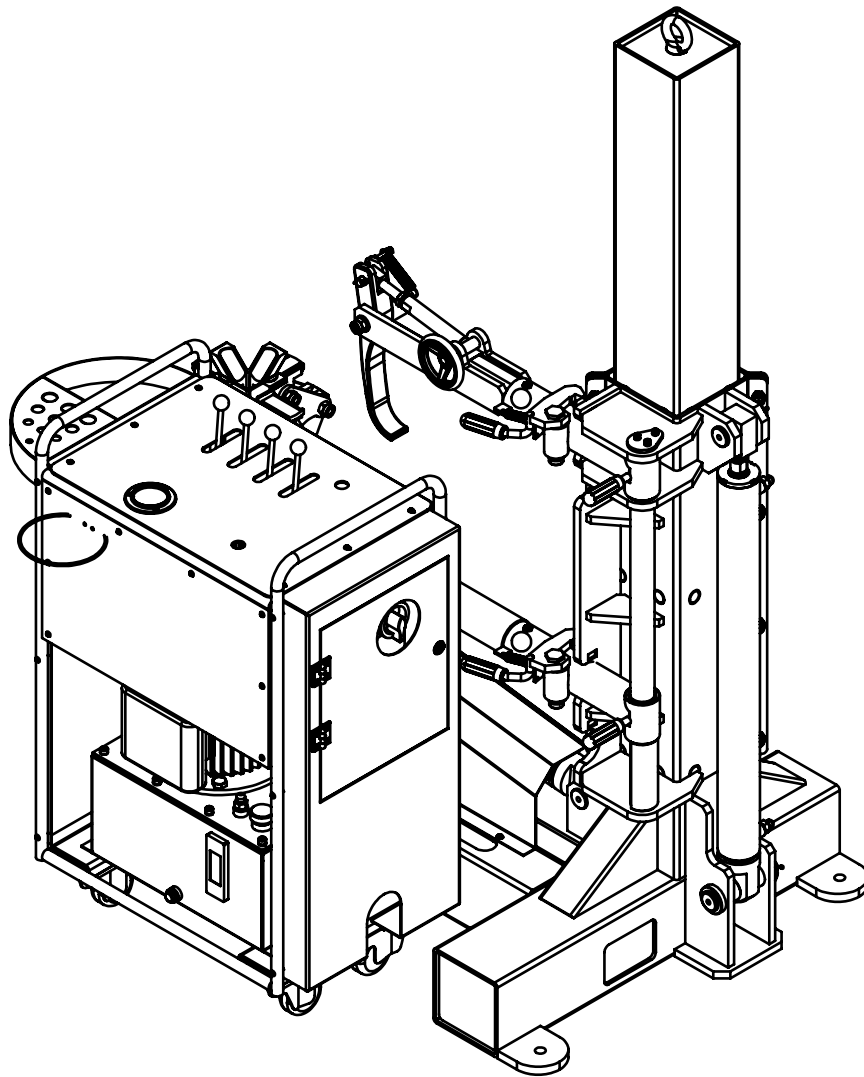
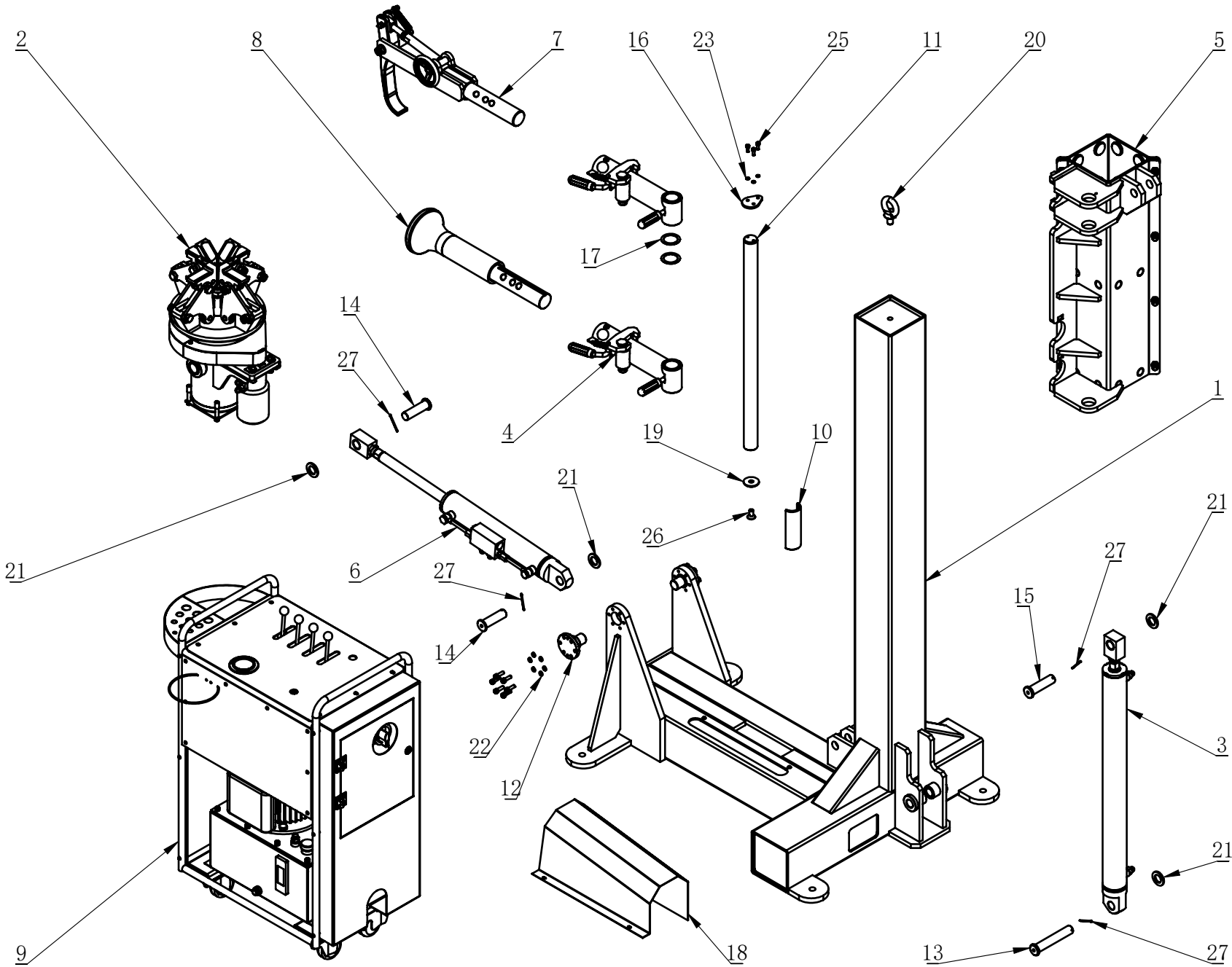
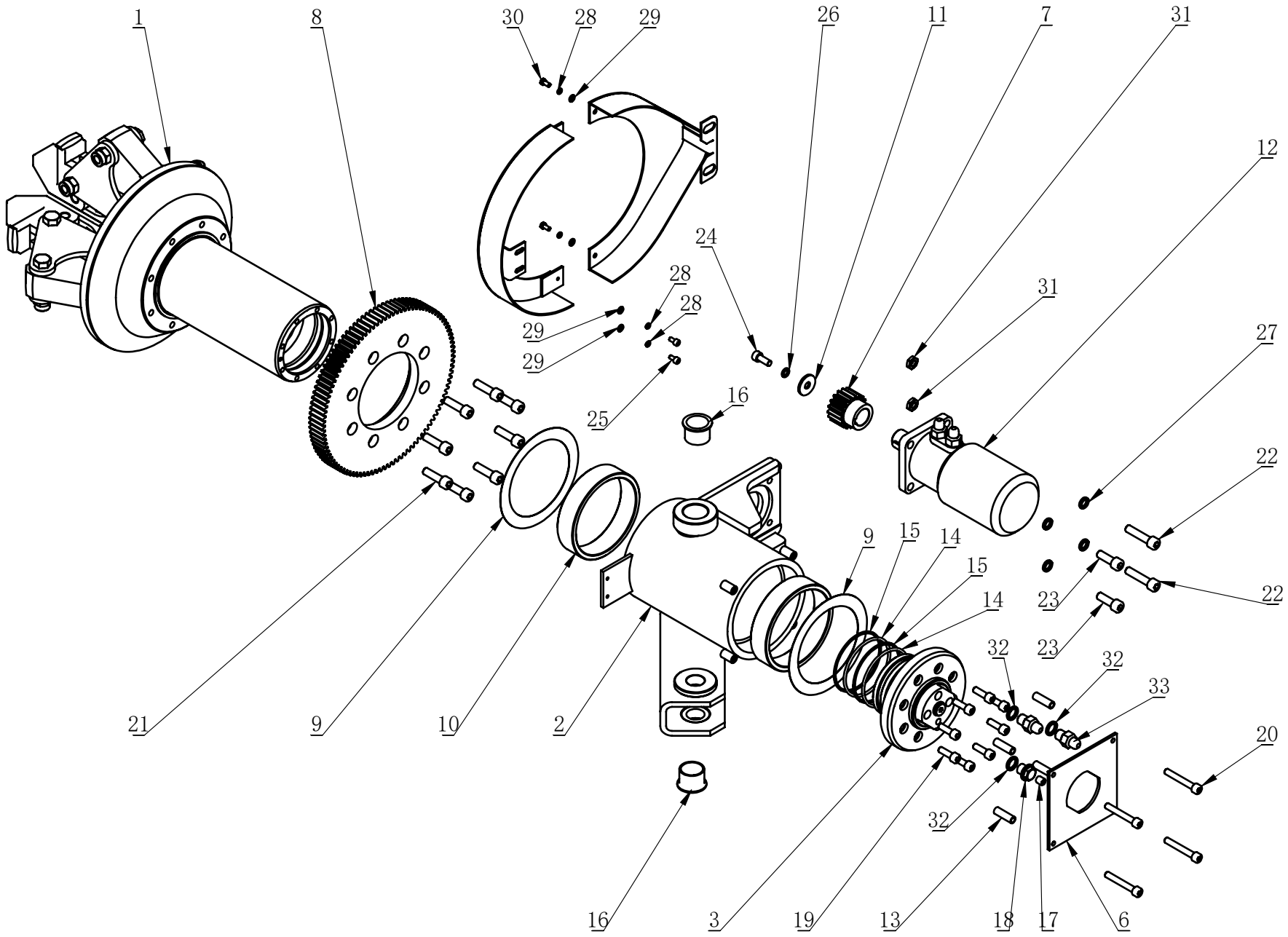


# LC585 Exploded Drawing



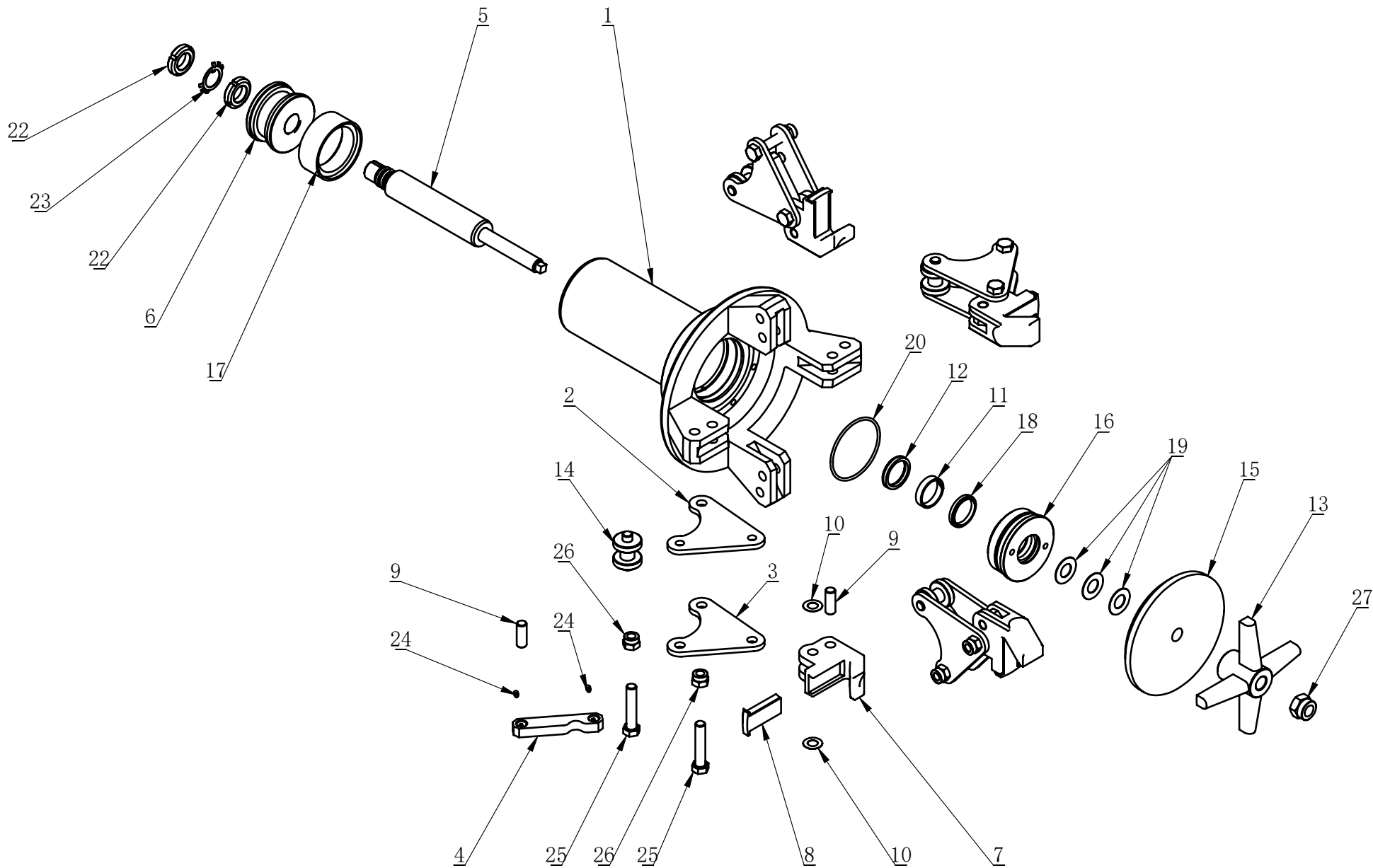


ITEM	PART. No	DESCRIPTION.	QT. Y
1	TC-17-1100000	COLUMN	1
2	TC-17-1200000	MAIN SHAFT ASSEMBLY	1
3	TC-17-1300000	TROLLEY HYDRAULIC CYLINDER ASSEMBLY	1
4	TC-17-1400000	TOOL ARM ASSEMBLY	2
5	TC-17-1500000	TROLLEY ASSEMBLY	1
6	TC-17-1600000	ROLLING-OVER THE CYLINDER ASSEMBLY	1
7	TC-17-1700000	DISMOUNTING HOOK ASSEMBLY	1
8	TC-17-1800000	TIRE ROLLER ASSEMBLY	1
9	TC-17-1900000	OPERATING TABLE AND HYDRAULIC STATION ASSEMBLY	1
10	TC-17-1A00000	MAGNETIC SEMICIRCLE SLEEVE	1
11	TC-17-1000001	VERTICAL SHAFT	1
12	TC-17-1000002	END AXLE	2
13	TC-17-1000003	HINGED SHAFT UNDER TROLLEY HYDRAULIC CYLINDER	1
14	TC-17-1000004	PIN UNDER ROLLING-OVER THE CYLINDER	2
15	TC-17-1000005	HINGED SHAFT ABOVE TROLLEY HYDRAULIC CYLINDER	1
16	TC-17-1000006	FIXED COVER OF VERTICAL SHAFT	1
17	TC-17-1000007	ADJUSTABLE PAD	2
18	TC-17-1000008	COVER	1
19	TC-40-1200013	PRESS WASHER	1
20	GB825-M16	CROSS RECESSED HEXAGON HEAD SCREW	1
21	GB95-24	FLAT WASHER	4
22	GB93-8	STANDARD SPRING WASHER	12
23	GB93-6	STANDARD SPRING WASHER	3
24	GB70. 1-M8×25	INNER HEXA CYLINDRICAL SCREW	12
25	GB70. 1-M6×16	INNER HEXA CYLINDRICAL SCREW	3
26	GB70. 3-M12×25	INNER COUNTERSUNK SCREW	1
27	GB91-3. 2×45	SLOTTED PIN	4
28	GB70. 2-M6×10	INNER HEXA CYLINDRICAL ROUND HEAD SCREW	4



TC-17-120000

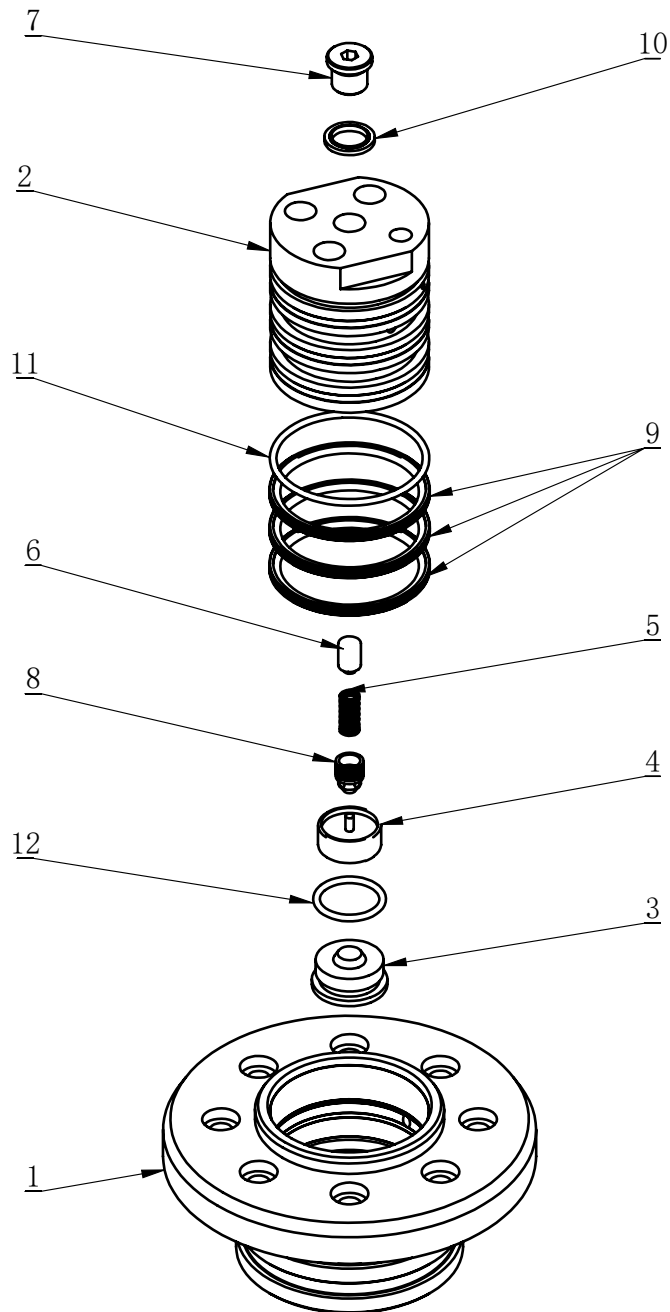
ITEM	PART. No	DESCRIPTION.	QT. Y
1	TC-17-1210000	CORE	1
2	TC-17-1220000	TWIST	1
3	TC-17-1230000	OIL GUIDE	1
4	TC-17-1240000	REAR GEAR COVER	1
5	TC-17-1250000	FRONT GEAR COVER	1
6	TC-17-1200001	FENCE	1
7	TC-17-1200002	PINION	1
8	TC-17-1200003	MAIN GEAR	1
9	TC-17-1200004	WEAR-RESISTING WASHER	2
10	TC-17-1200005	SOLID SELF-LUBRICATING BEARINGS	2
11	TC-17-1200006	WASHER	1
12	TC-17-1200007	HYDRAULIC MOTOR	1
13	TC-17-1200008	SPACER BUSH	4
14	TC-40-1400036	HYDRAULIC-PNEUMATIC RUBBER O-RING	2
15	TC-40-1400037	RUBBER SEAL WASHER	2
16	SF-1F-30260	FLANGED COIL BUSHING	2
17	JB / ZQ4447-1997-G1 / 8×10	SCREWS PLUG G1/8×10	1
18	GB / T14626 M14×1.5	SCREWED PLUG M14×1.5	1
19	GB70. 1-M8×25	INNER HEXA CYLINDRICAL SCREW	8
20	GB70. 1-M8×55	INNER HEXA CYLINDRICAL SCREW	4
21	GB70. 1-M10×35	INNER HEXA CYLINDRICAL SCREW	8
22	GB70. 1-M10×45	INNER HEXA CYLINDRICAL SCREW	2
23	GB70. 1-M10×30	INNER HEXA CYLINDRICAL SCREW	2
24	GB70. 1-M8×20	INNER HEXA CYLINDRICAL SCREW	1
25	GB70. 1-M5×10	INNER HEXA CYLINDRICAL SCREW	2
26	GB93-8	STANDARD SPRING WASHER	1
27	GB93-10	STANDARD SPRING WASHER	4
28	GB93-5	STANDARD SPRING WASHER	4
29	GB95-5	FLAT WASHER	4
30	GB5783-M5×10	HEXANGULAR BOLT	2
31	GB6172. 1-M10	HEXANGULAR THIN NUT	2
32	JB982-14	SEALING COMPOUND	3
33	TC-10-1620005	OIL ROUTE DOUBLE SCREW ROD	2



## TC-17-1210000

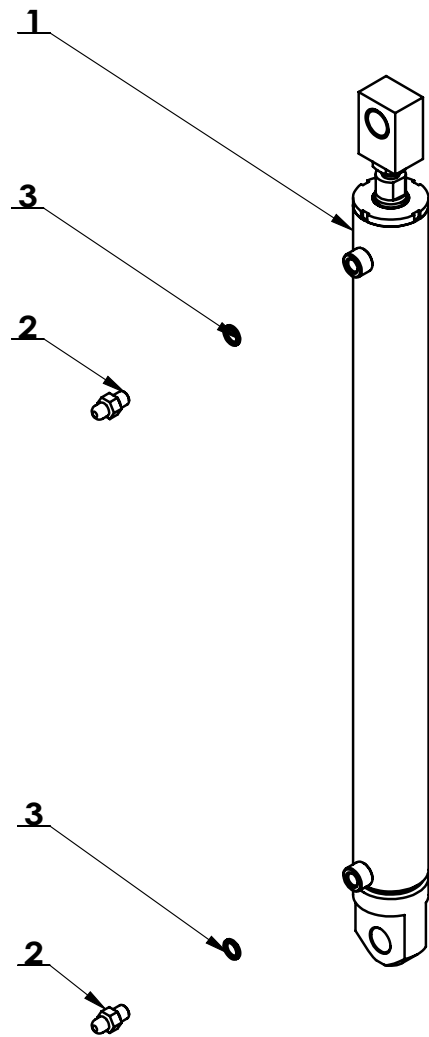
ITEM	PART. No	DESCRIPTION.	QT. Y
1	TC-17-1211000	CLAMP BASE	1
2	TC-17-1210001	CONNECTING PLATE A	4
3	TC-17-1210002	CONNECTING PLATE B	4
4	TC-17-1210003	PULL ROD	4
5	TC-17-1210004	PISTON ROD	1
6	TC-17-1210005	PISTON	1
7	TC-17-1210006	CLAMP	4
8	TC-17-1210007	CLAMP COVER	4
9	TC-10-1420004	PIN SHAFT	8
10	TC-10-1420010	ADJUSTABLE PAD	8
11	TC-40-1410001	SUPPORT RING	1
12	TC-40-1410004	SEALING WASHER	1
13	TC-40-1410008	CROSS SLIDE	1
14	TC-40-1410009	ROLLING WHEEL	4
15	TC-40-1410010	PRESS PLATE	1
16	TC-40-1410011	OIL TANK FRONT COVER	1
17	TC-40-1410013	COMPACT WASHER	1
18	TC-40-1200019	LBH-40 DUST-PROOF WASHER	1
19	TC-40-1410016	ADJUSTING PAD	3
20	GB3452. 1-90×3. 55-G	HYDRAULIC-PNEUMATIC RUBBER O-RING	1
21	GB3452. 1-90×3. 55-G	HYDRAULIC-PNEUMATIC RUBBER O-RING	2
22	GB812-M27×1. 5	CIRCULAR NUT	2
23	GB858-27	STOP WASHER FOR ROUND NUT	1
24	GB79-M6×10	INNER HEXA CYLINDRICAL TERMINUS SET SCREW	8
25	GB5782-M14×70	HEXANGULAR BOLT	8
26	GB889. 1-M14	1-TYPE PREVAILING TORQUE TYPE HEXAGON LOCK NUT	8
27	1型非金属嵌件六角锁紧螺母 M20	1-TYPE PREVAILING TORQUE TYPE HEXAGON LOCK NUT	1

TC-17-1230000



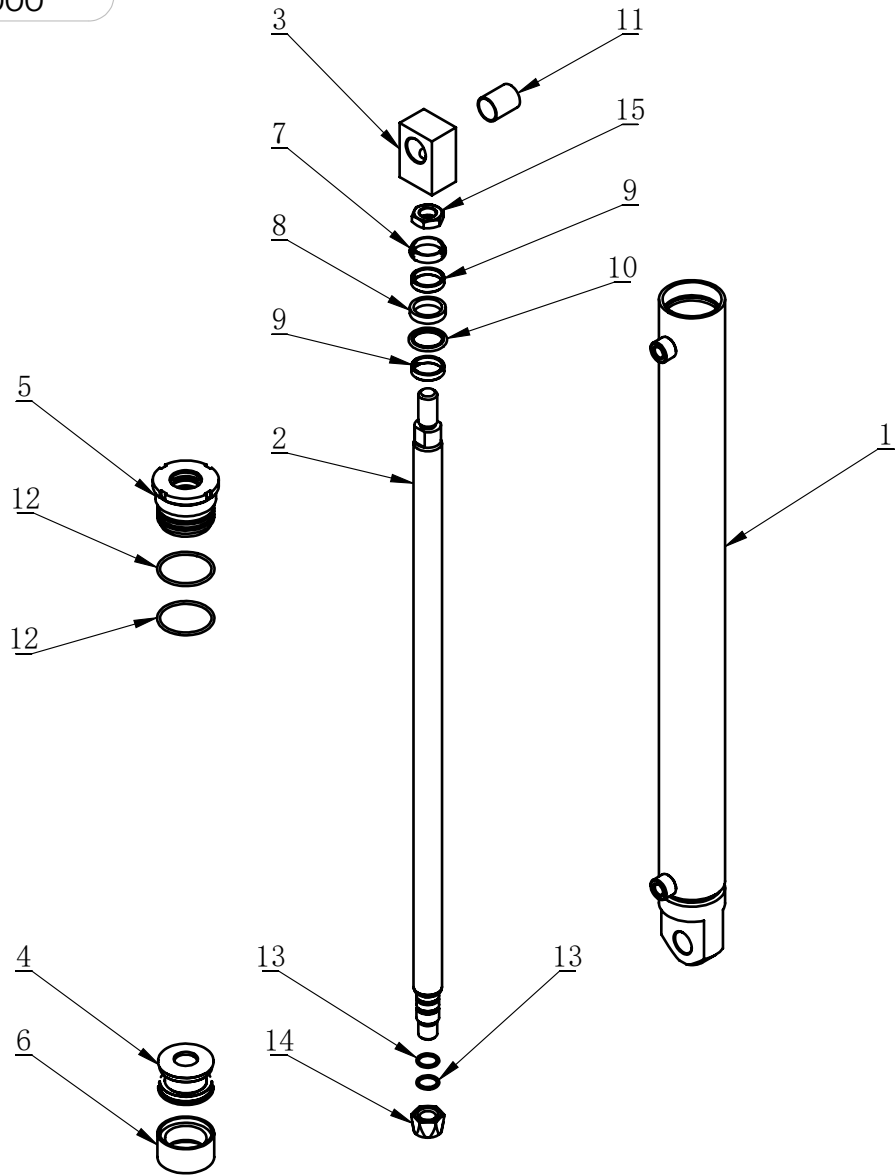
ITEM	PART. No	DESCRIPTION.	QT. Y
1	TC-17-1230001	REAR END COVER	1
2	TC-40-1450001	OIL GUIDE	1
3	TC-40-1450002	WIRE PLUG	1
4	TC-40-1450003	CONTROL PISTON	1
5	TC-40-1450004	OIL GUIDE SPRING	1
6	TC-40-1450005	PUSH ROD	1
7	TC-40-1450006	WIRE PLUG	1
8	TC-40-1450007	VALVE-SWITCHING MECHANISM	1
9	TC-40-1450009	SEALING RING	3
10	JB982-14	SEALING COMPOUND	1
11	GB3452. 1-58×2. 65-G	HYDRAULIC-PNEUMATIC RUBBER O-RING G TYPE	1
12	GB3452. 1-23. 6×2. 65-G	HYDRAULIC-PNEUMATIC RUBBER O-RING G TYPE	1





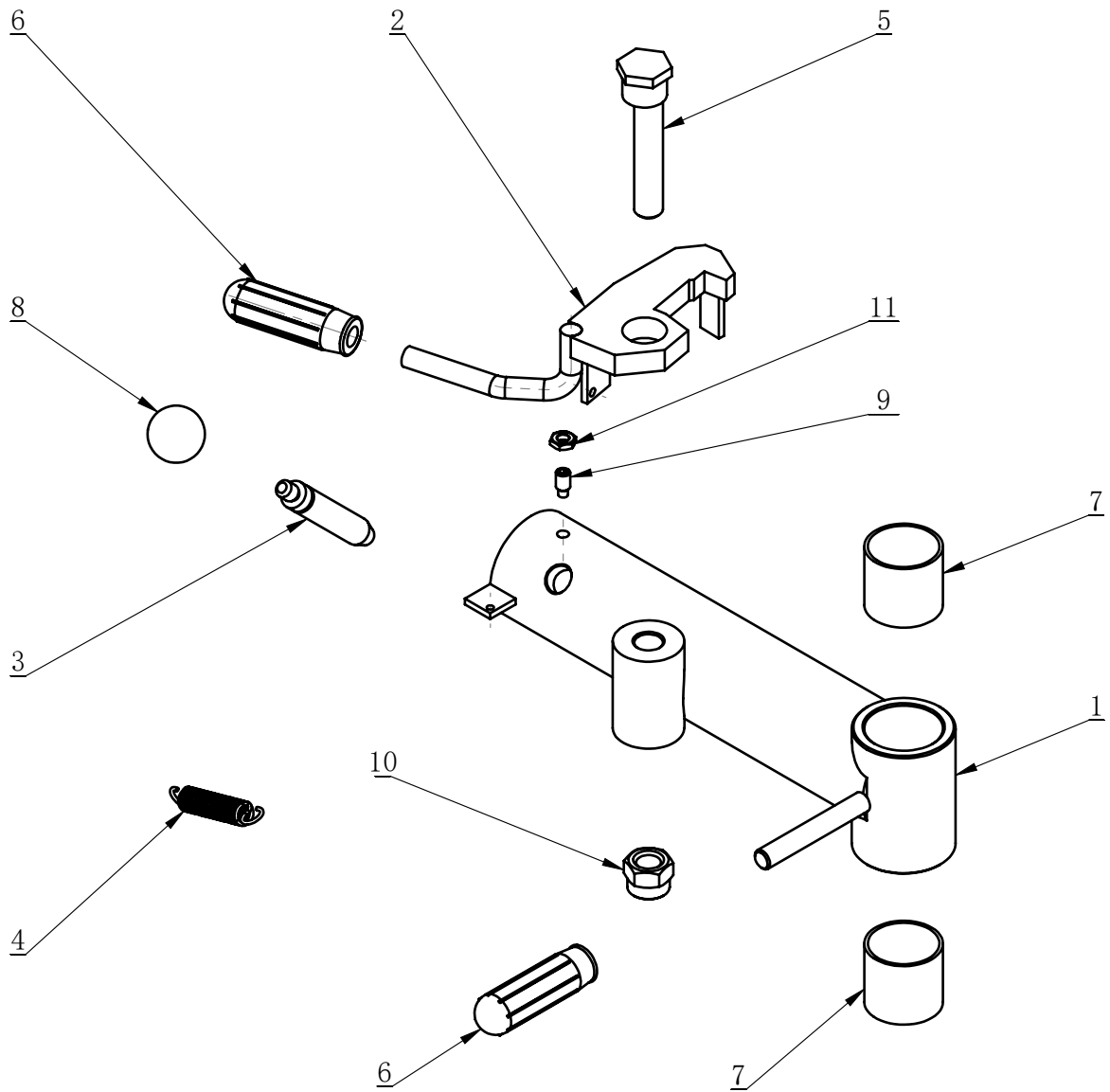
ITEM	PART. No	DESCRIPTION.	QT. Y
1	TC-17-1310000	TROLLEY HYDRAULIC CYLINDER	1
2	TC-10-1620005	OIL ROUTE DOUBLE SCREW ROD	2
3	JB982-14	SEALING COMPOUND	2

TC-17-1310000

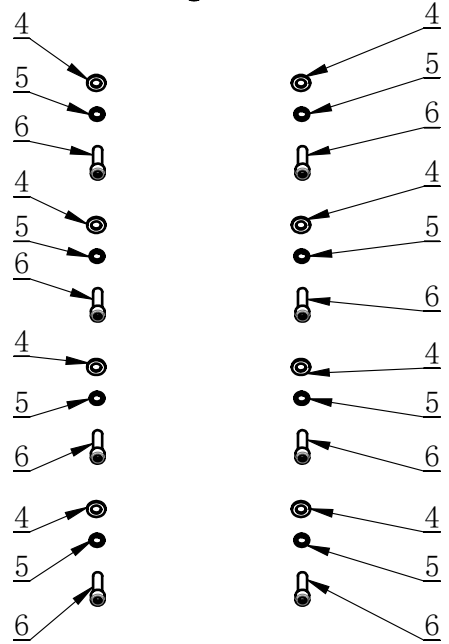
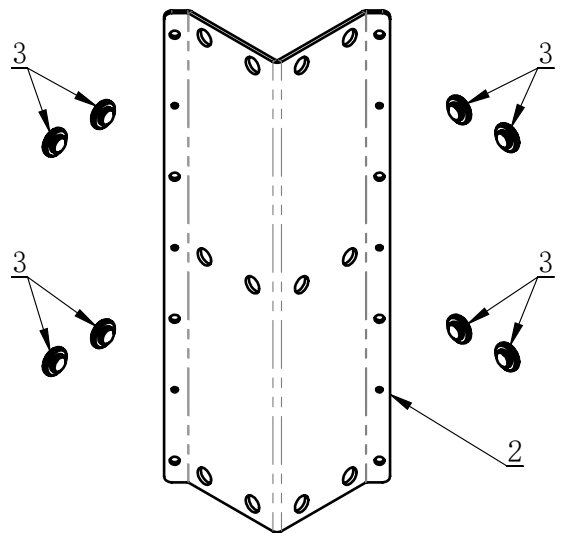
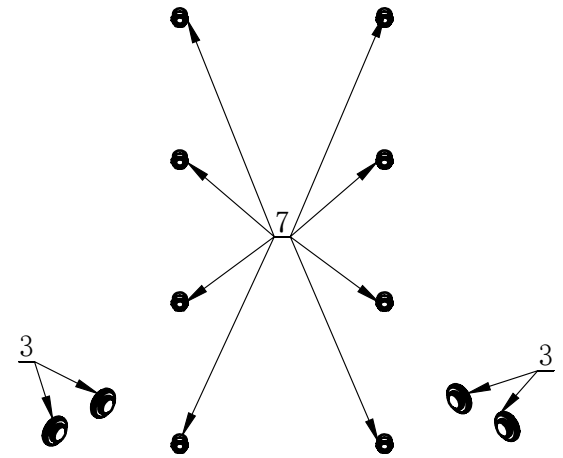
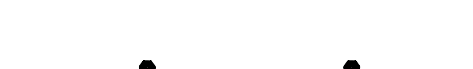
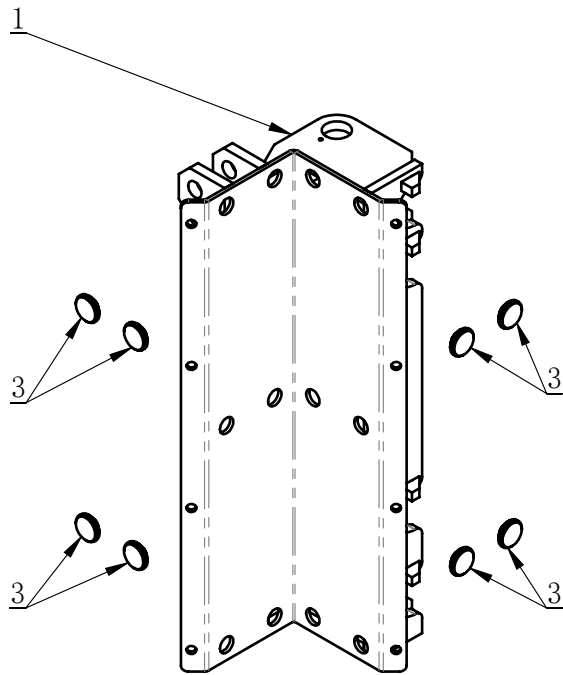


ITEM	PART. No	DESCRIPTION.	QT. Y
1	TC-17-1311000	CYLINDER WELDING	1
2	TC-17-1310001	PISTON ROD	1
3	TC-17-1310002	TIE ROD	1
4	TC-20-1500002	PISTON	1
5	TC-20-1500003	OIL TANK HEAD	1
6	TC-20-1500004	ASSEMBLY SEALING	1
7	TC-20-1500005	DUST-PROOF RING LBH-25	1
8	TC-20-1500006	U-RING U2817	1
9	TC-20-1500007	SUPPRP RING	2
10	TC-20-1500008	RING GSJ0350L	1
11	GB / T 12613-25×28×35	WRAPPED BEARING BUSH 28×25×35	1
12	TC-20-1500009	MAIN SHAFT O-RING	2
13	GB3452.1-19×2.65-G	HYDRAULIC-PNEUMATIC RUBBER O-RING G TYPE	2
14	GB6185.2-M20×1.5	2-TYPE METAL HEXAGON LOCK NUT, SMALL TOOTH	1
15	六角薄螺母 M20	HEXANGULAR THIN NUT	1

TC-17-1400000

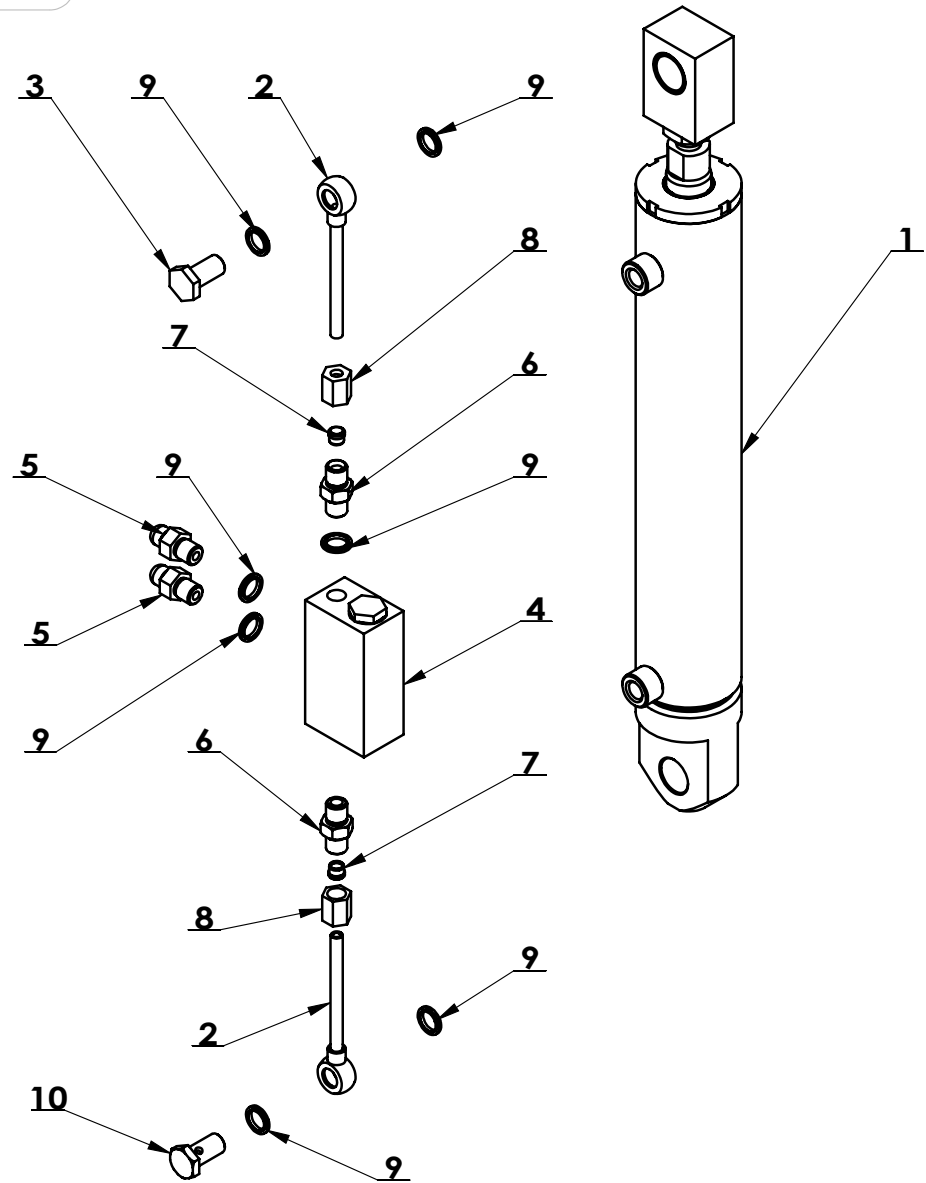


ITEM	PART. No	DESCRIPTION.	QT. Y
1	TC-17-1410000	TOOL ARM WELDING ASSEMBLY	1
2	TC-17-1420000	TIGER HOOK	1
3	TC-17-1400001	SHORT BOLT	1
4	TC-17-1400002	SPRING OF TIGER HOOK	1
5	TC-17-1400003	ECCENTRIC SHAFT	1
6	TC-40-1200022	RUBBER COVER	2
7	GB / T 12613-40×44×40	WRAPPED BEARING BUSH	2
8	MH-12-1360011	BALL HANDLE M10XSD32	1
9	GB79-M8×16	INNER HEXA CYLINDRICAL TERMINUS SET SCREW	1
10	GB889. 1-M16	1-TYPE PREVAILING TORQUE TYPE HEXAGON LOCK NUT	1
11	GB6172. 1-M8	HEXANGULAR THIN NUT	1



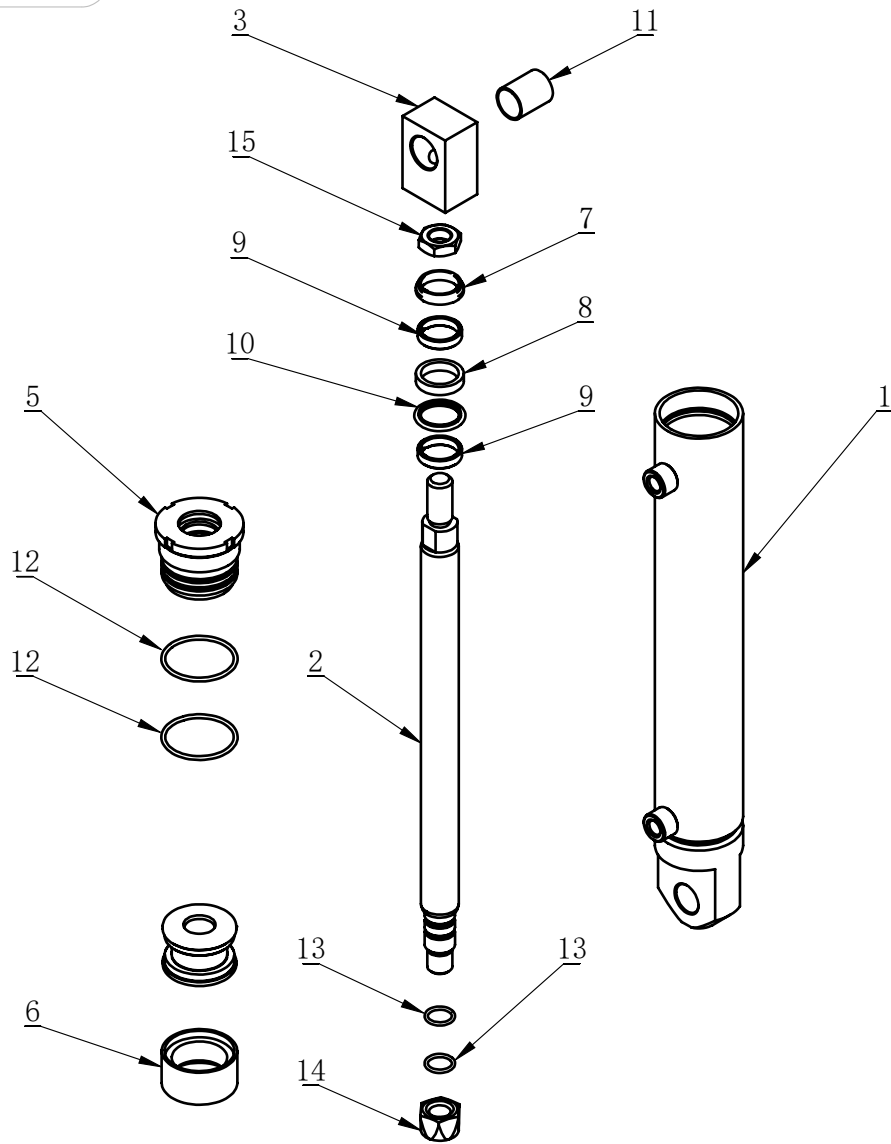
ITEM	PART. No	DESCRIPTION.	QT. Y
1	TC-17-1510000	FRONT DRAG PLATE ASSEMBLY WELDS	1
2	TC-17-1500001	REAR DRAGGING PLATE	1
3	TC-17-1500002	SLIDING BLOCK	24
4	GB97. 1-12	FLAT WASHER A GRADE	8
5	GB93-12	STANDARD SPRING WASHER	8
6	GB70. 1-M12×45	INNER HEXA CYLINDRICAL SCREW	8
7	GB6182-M12	2-TYPE PREVAILING TORQUE TYPE HEXAGON LOCK NUT	8
8	GB77-M10×25	INNER HEXA FLAT TERMINUS SET SCREW	6
9	GB6172. 1-M10	HEXANGULAR THIN NUT	6

TC-17-1600000

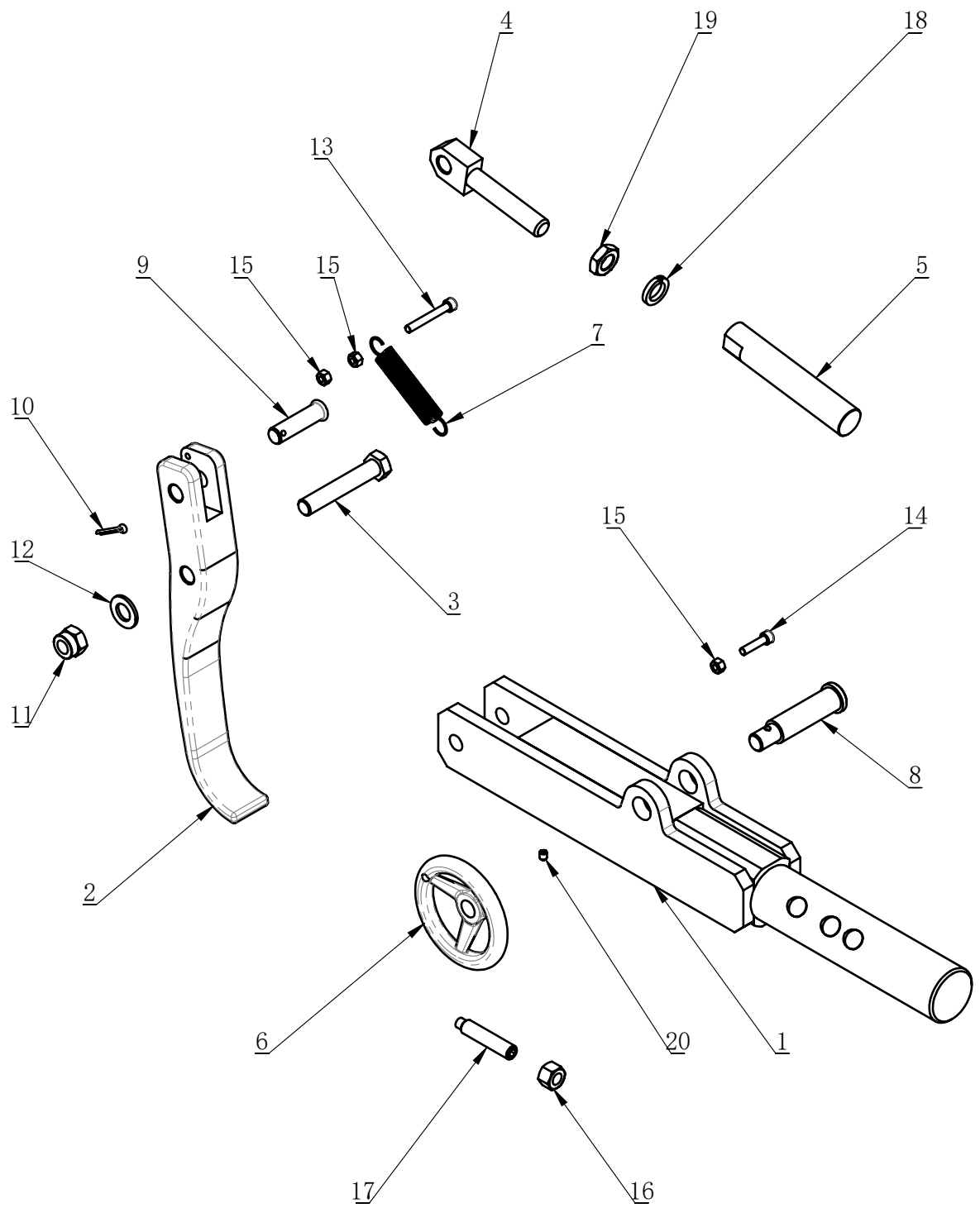


ITEM	PART. No	DESCRIPTION.	QT. Y
1	TC-17-1610000	FLIP OIL CYLINDER	1
2	TC-21-1630000	OIL PIPE JOINT NOZZAL ASSEMBLY WELDING	2
3	TC-10-1700001	NOZZAL	1
4	TC-10-1700003	HYDRAULIC LOCK	1
5	TC-10-1620005	OIL ROUTE DOUBLE SCREW ROD	2
6	TC-10-1620001	OIL PIPE DOUBLE SCREW ROD	2
7	TC-10-1620006	CLAMP BUSHING	2
8	TC-10-1620002	NUT-LOCK	2
9	JB982-14	SEALING COMPOUND	8
10	TC-10-1700002	OIL TUBE CONNECTOR	1

TC-17-1610000

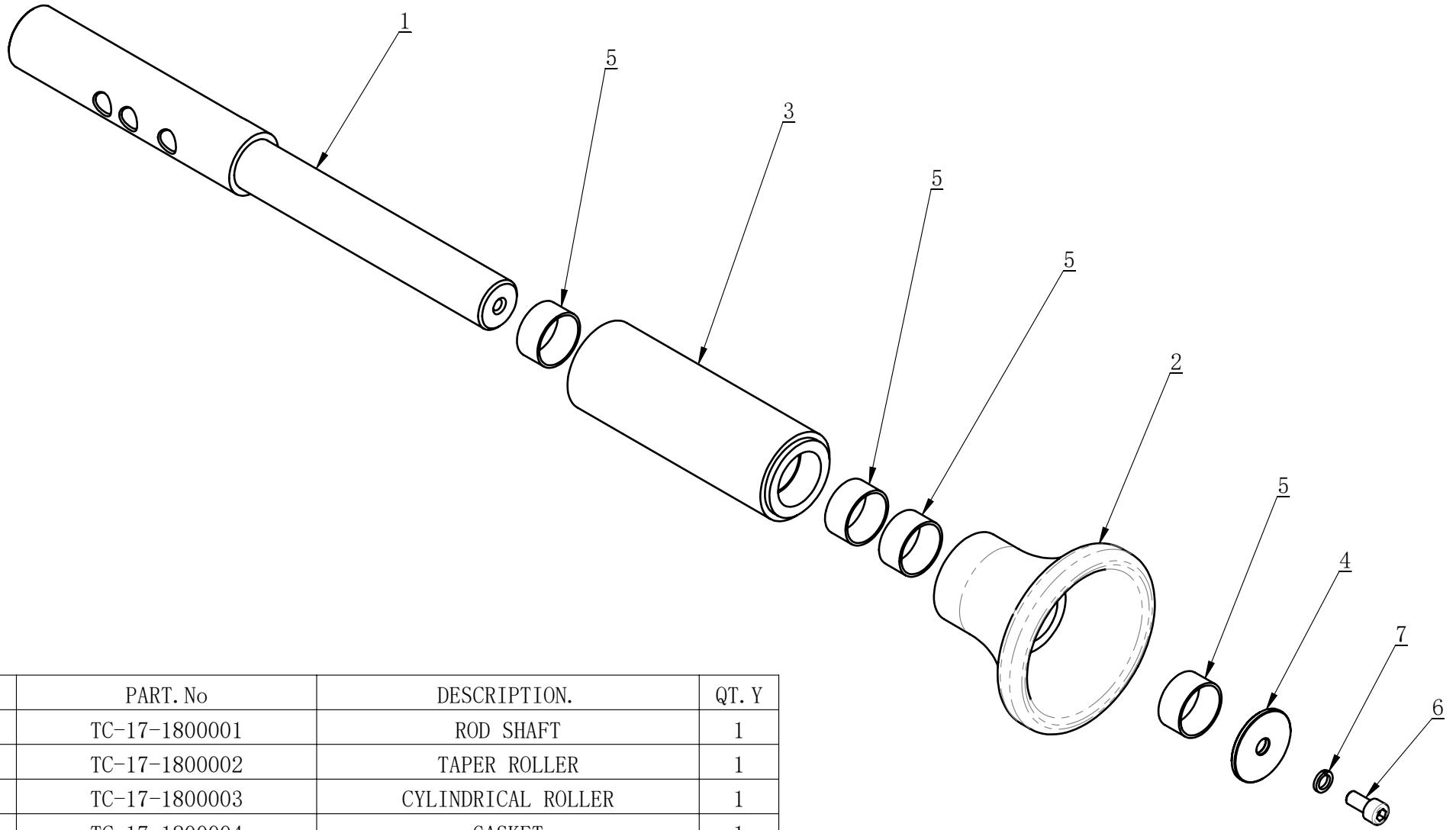


ITEM	PART. No	DESCRIPTION.	QT. Y
1	TC-17-1611000	CYLINDER WELDING	1
2	TC-17-1610001	PISTON ROD	1
3	TC-17-1310002	TIE ROD	1
4	TC-20-1500002	PISTON	1
5	TC-20-1500003	OIL TANK HEAD	1
6	TC-20-1500004	ASSEMBLY SEALING	1
7	TC-20-1500005	DUST-PROOF RING	1
8	TC-20-1500006	U-RING U2817	1
9	TC-20-1500007	SUPPRP RING	2
10	TC-20-1500008	RING GSJ0350L	1
11	GB / T 12613-25×28×35	WRAPPED BEARING BUSH 28×25×35	1
12	TC-20-1500009	MAIN SHAFT O-RING	2
13	GB3452.1-19×2.65-G	HYDRAULIC-PNEUMATIC RUBBER O-RING G TYPE	2
14	GB6185.2-M20×1.5	2-TYPE METAL HEXAGON LOCK NUT, SMALL TOOTH	1
15	六角薄螺母 M20	HEXANGULAR THIN NUT	1

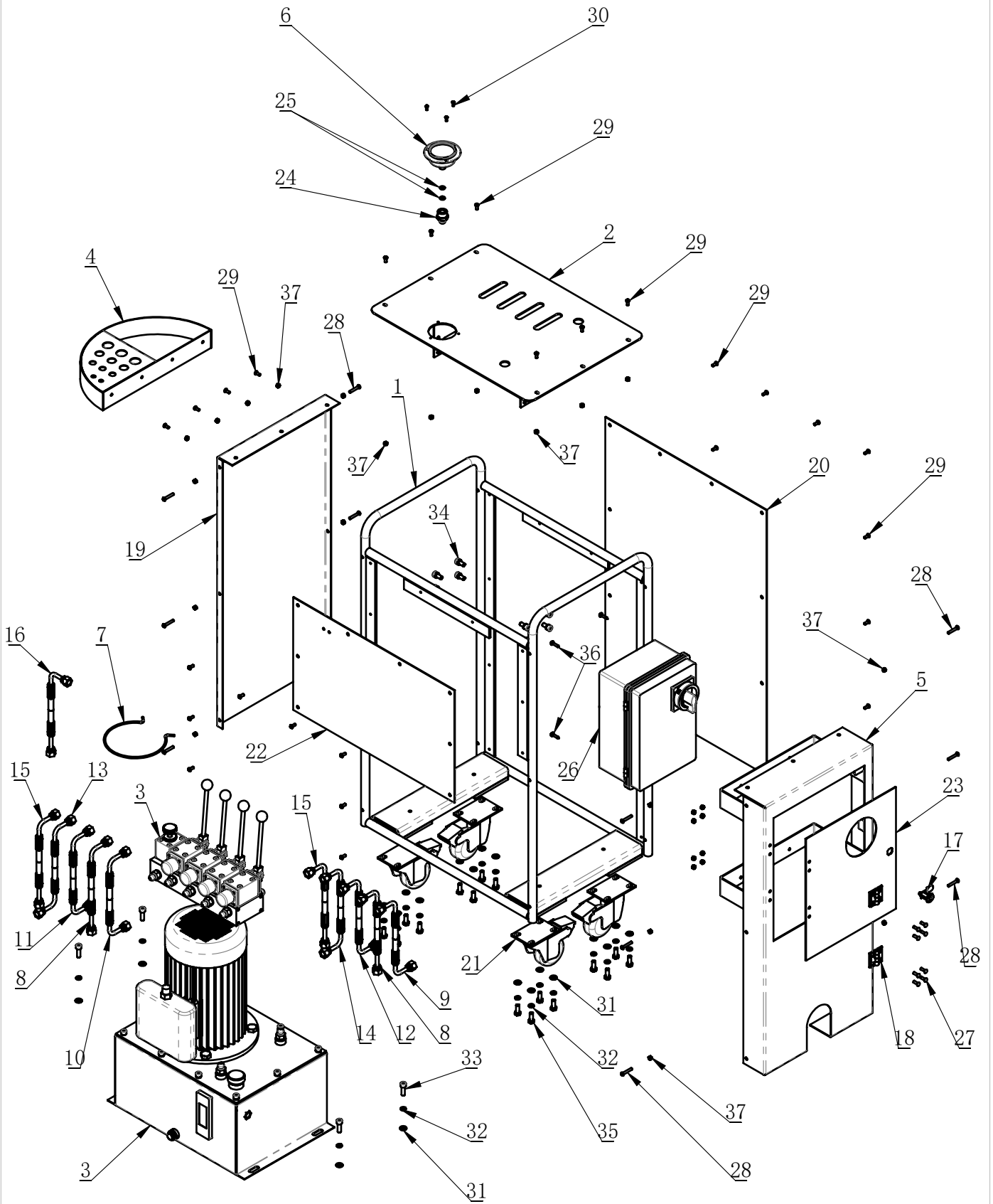




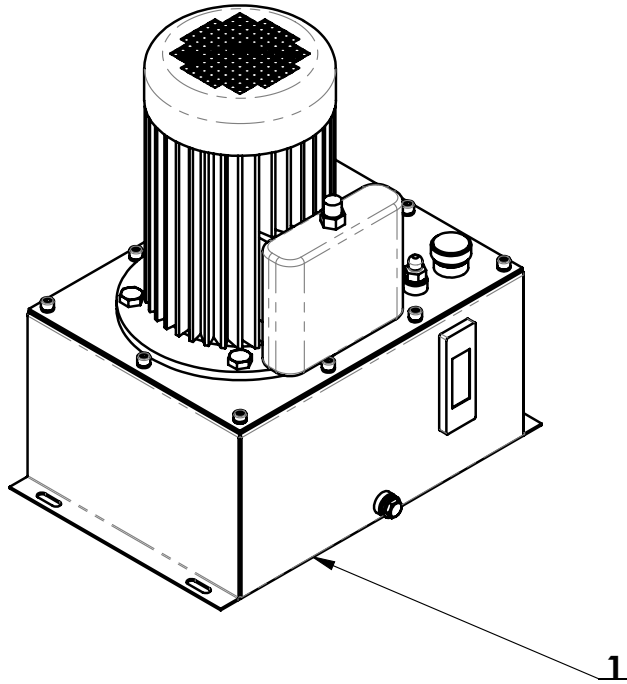
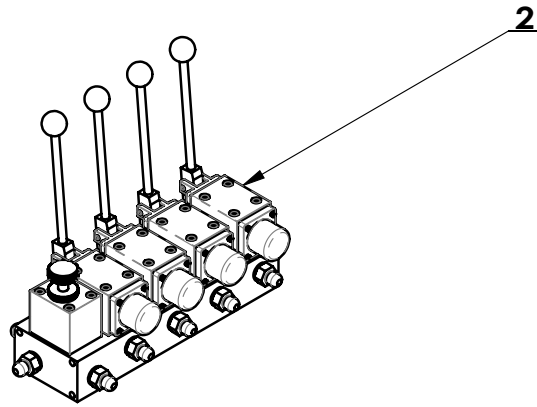
ITEM	PART. No	DESCRIPTION.	QT. Y
1	TC-17-1710000	FIXING BASE OF THE TIRE DISMOUNTING HOOK	1
2	TC-17-1700001	TIRE DISMOUNTING HOOK	1
3	TC-10-1420014	THREAD PIN	1
4	TC-17-1700003	HINGE SCREW	1
5	TC-17-1700004	CONNECTING ROD	1
6	TC-17-1700005	HANDWHEEL	1
7	TC-17-1700007	TENSION SPRING	1
8	TC-17-1700008	ROTATING SHAFT	1
9	GB882-14×50	PIN SHAFT	1
10	GB91-4×25	SLOTTED PIN	1
11	GB889. 1-M14	1-TYPE PREVAILING TORQUE TYPE HEXAGON LOCK NUT	1
12	GB95-14	FLAT WASHER	1
13	GB70. 1-M6×45	INNER HEXA CYLINDRICAL SCREW	1
14	GB70. 1-M6×25	INNER HEXA CYLINDRICAL SCREW	1
15	六角螺母 C级 GB/T 41-2000 - M6	HEXANGULAR NUT	3
16	GB41-M12	HEXANGULAR NUT	1
17	GB79-M12×60	INNER HEXA CYLINDRICAL TERMINUS SET SCREW	1
18	GB93-16	STANDARD SPRING WASHER	1
19	GB6172. 1-M16	HEXANGULAR THIN NUT	1
20	GB78-M6×8	INNER HEXA CONIC TERMINUS SET SCREW	1



ITEM	PART. No	DESCRIPTION.	QT. Y
1	TC-17-1800001	ROD SHAFT	1
2	TC-17-1800002	TAPER ROLLER	1
3	TC-17-1800003	CYLINDRICAL ROLLER	1
4	TC-17-1800004	GASKET	1
5	GB / T 12613-38×42×20	ROLLED SLEEVE	4
6	GB70.1-M10×20	INNER HEXA CYLINDRICAL SCREW	1
7	GB93-10	STANDARD SPRING WASHER	1

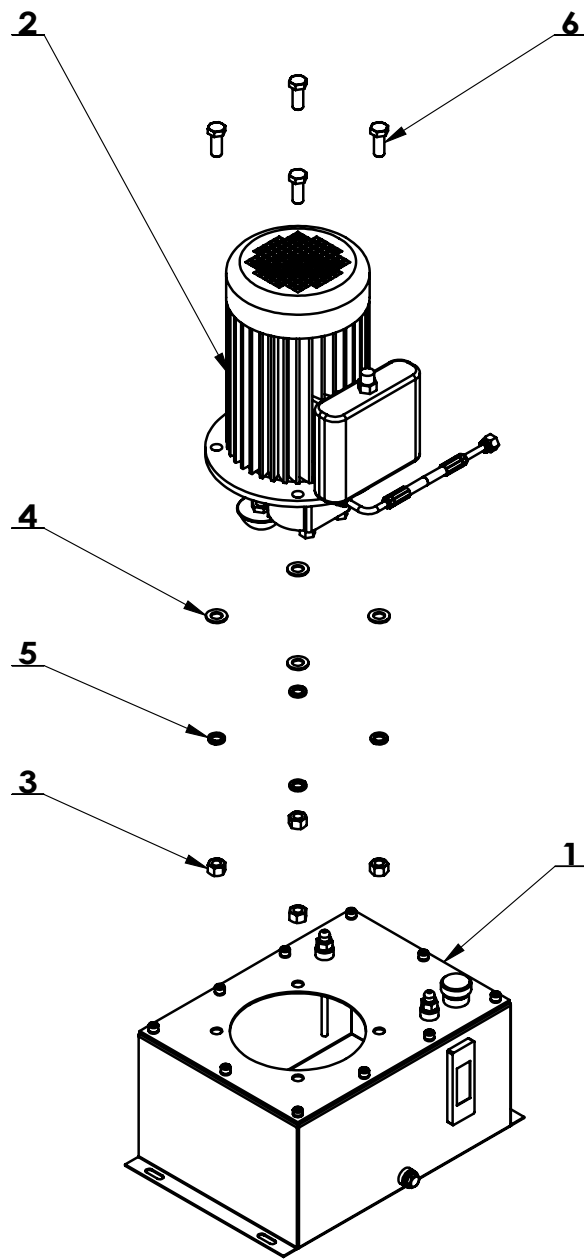


ITEM	PART. No	DESCRIPTION.	QT. Y
1	TC-17-1910000	FRAME BODY OF CONSOLE	1
2	TC-17-1920000	WELDING PARTS FOR UPPER COVER PLATE	1
3	TC-17-1940000	HYDRAULIC STATION ASSEMBLY	1
4	TC-17-1960000	TOOL HOLDER	1
5	TC-17-1970000	SIDE PANEL ASSEMBLY WELDS	1
6	TC-40-1400022	AXIAL PRESSURE GAUGE	1
7	C-54-8000004	WATER BOX STENT	1
8	YG-1302700	REVERSE THE OIL CYLINDER TUBING	2
9	YG-1103250B	SUPPORT CLIP TUBING B	1
10	YG-1103250A	SUPPORT CLIP TUBING A	1
11	YG-1102450	PULL UP THE OIL PIPE OF THE PLATE CYLINDER	1
12	YG-1102950	DRAG THE PLATE CYLINDER DOWN THE TUBING	1
13	YG-1103450B	MOTOR TUBING B	1
14	YG-1103450A	MOTOR TUBING A	1
15	YG-1300600	INLET AND RETURN TUBING	2
16	YG-1300400	PRESSURE GAUGE TUBING	1
17	MH-19-2000029	CUPBOARD DOOR LOCK	1
18	MH-19-2001000	ALUMINIUM ALLOY HINGE	2
19	TC-17-1900001	THE SIDE COVER	1
20	TC-17-1900003	FRONT COVER PLATE	1
21	TC-17-1900005	BRAKE CASTER	4
22	TC-17-1900006	REAR COVER PLATE	1
23	TC-17-1900007	SMALL COVER PLATE	1
24	TC-40-1400010	PRESSURE GAUGE CONNECTOR	1
25	TC-10-1620003	PRESSURE GAUGE CONNECTOR GASKET	2
26	TC-17-2032380	LC585 THREE-PHASE 380V ELECTRIC CONTROL BOX	1
27	GB819. 1-M5×16-H	CROSS COUNTERSUNK SCREW STEEL 4. 8 GRADE	8
28	GB70. 2-M5×30	INNER HEXA CYLINDRICAL ROUND HEAD SCREW	12
29	GB70. 2-M5×12	INNER HEXA CYLINDRICAL ROUND HEAD SCREW	28
30	GB70. 2-M4×10	INNER HEXA CYLINDRICAL ROUND HEAD SCREW	3
31	GB95-8	FLAT WASHER	20
32	GB93-8	STANDARD SPRING WASHER	28
33	GB70. 1-M8×25	INNER HEXA CYLINDRICAL SCREW	4
34	GB70. 1-M8×16	INNER HEXA CYLINDRICAL SCREW	8
35	GB5783-M8×20	HEXANGULAR BOLT	16
36	GB845-ST4. 8×22 H C	CROSS PANHEAD TAPPING SCREW	4
37	GB41-M5	HEXANGULAR NUT	30



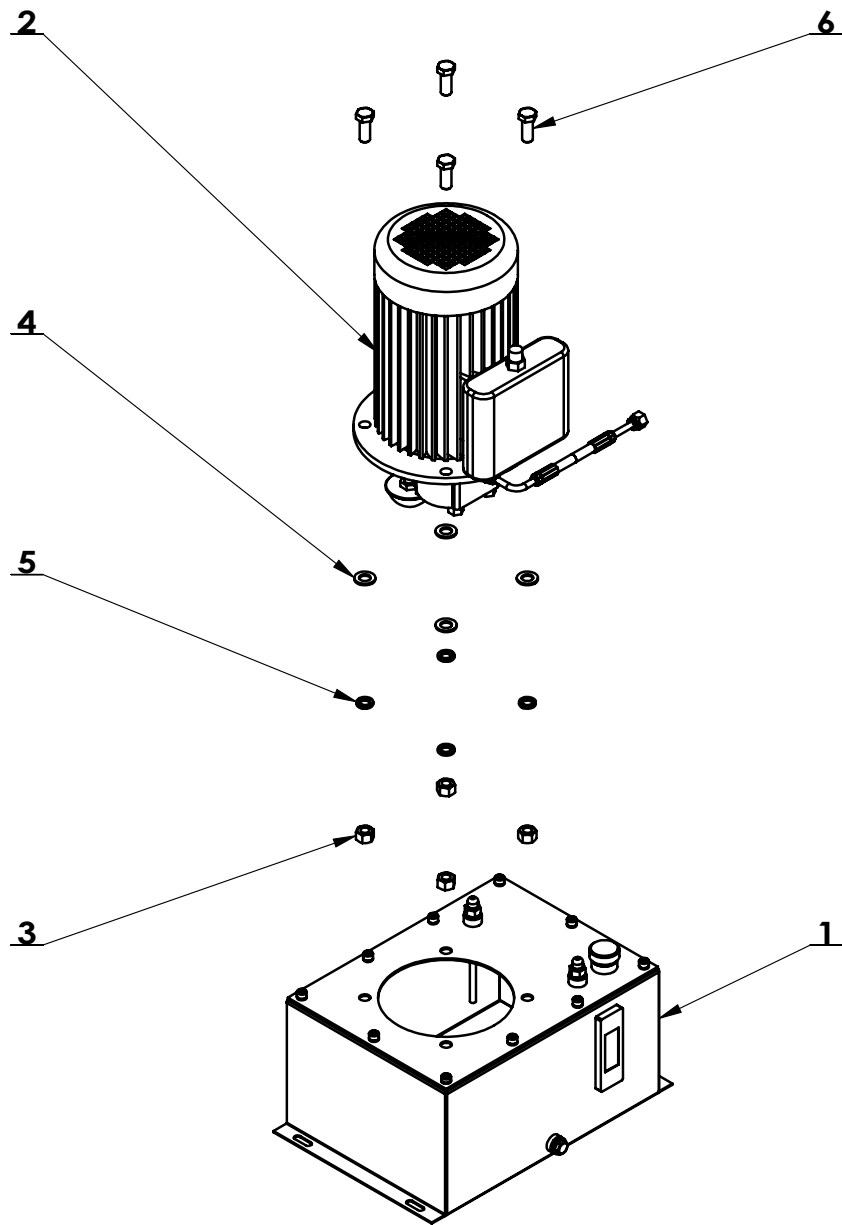
ITEM	PART. No	DESCRIPTION.	QT. Y
1	TC-17-1941000	PUMP STATION COMPONENT (3.0KW/380~415V/50~60HZ/3P)	1
2	TC-17-1942000	FOUR-WAY SOLENOID VALVE COMPONENT	1

TC-17-1941000

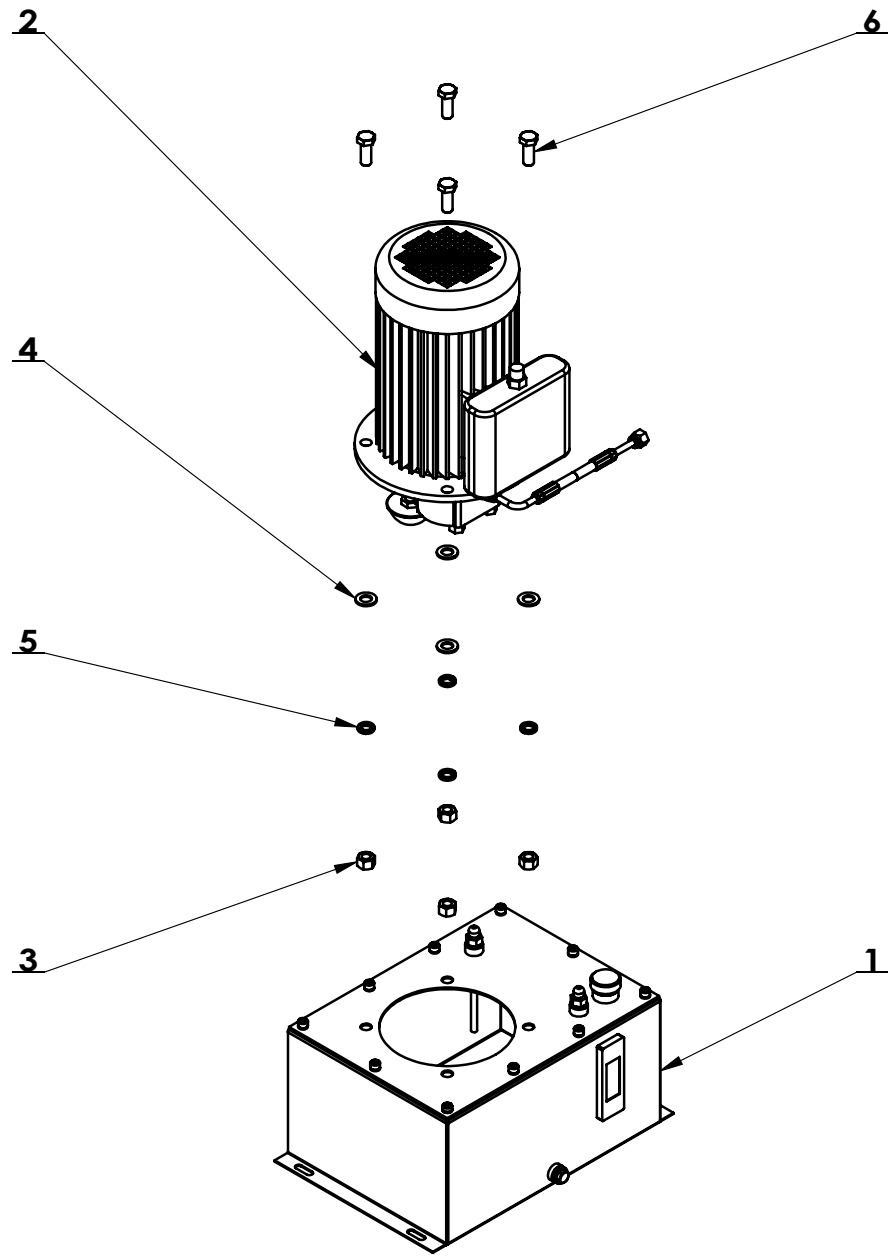


ITEM	PART. No	DESCRIPTION.	QT. Y
1	TC-17-1941100	PUMP STATION TANK	1
2	TC-17-1941200	MOTOR OIL PUMP ASSEMBLY (3.0KW/380~415V/50~60HZ/3P)	1
3	GB41-M14	HEXANGULAR NUT	4
4	GB95-14	FLAT WASHER	4
5	GB93-14	STANDARD SPRING WASHER	4
6	GB5781-M14×35	HEXANGULAR BOLT	4

TC-17-1941000A



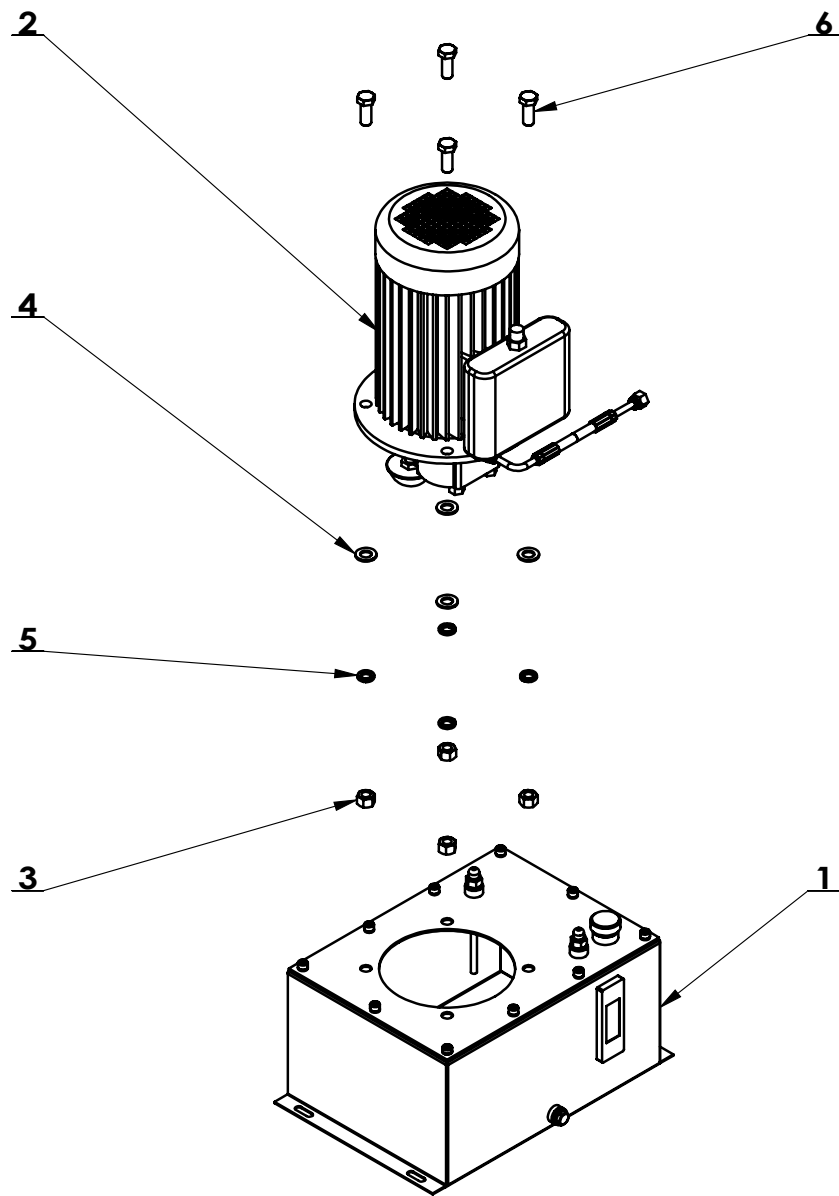
ITEM	PART. No	DESCRIPTION.	QT. Y
1	TC-17-1941100	PUMP STATION TANK	1
2	TC-17-1941200A	MOTOR OIL PUMP ASSEMBLY (3.0KW/220V/50HZ/1P)	1
3	GB41-M14	HEXANGULAR NUT	4
4	GB95-14	FLAT WASHER	4
5	GB93-14	STANDARD SPRING WASHER	4
6	GB5781-M14×35	HEXANGULAR BOLT	4



ITEM	PART. No	DESCRIPTION.	QT. Y
1	TC-17-1941100	PUMP STATION TANK	1
2	TC-17-1941200B	MOTOR OIL PUMP ASSEMBLY (3.0KW/220V/60HZ/1P)	1
3	GB41-M14	HEXANGULAR NUT	4
4	GB95-14	FLAT WASHER	4
5	GB93-14	STANDARD SPRING WASHER	4
6	GB5781-M14×35	HEXANGULAR BOLT	4

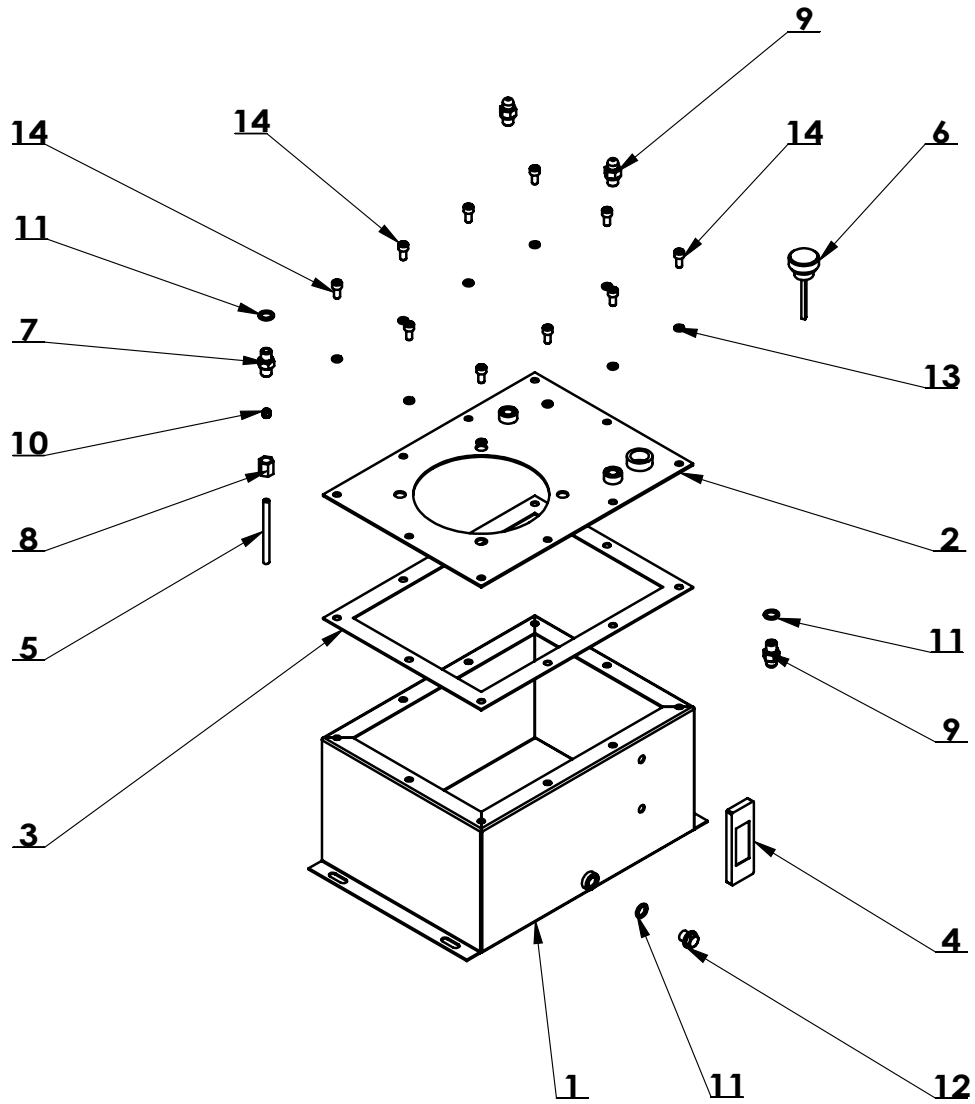


TC-17-1941000C

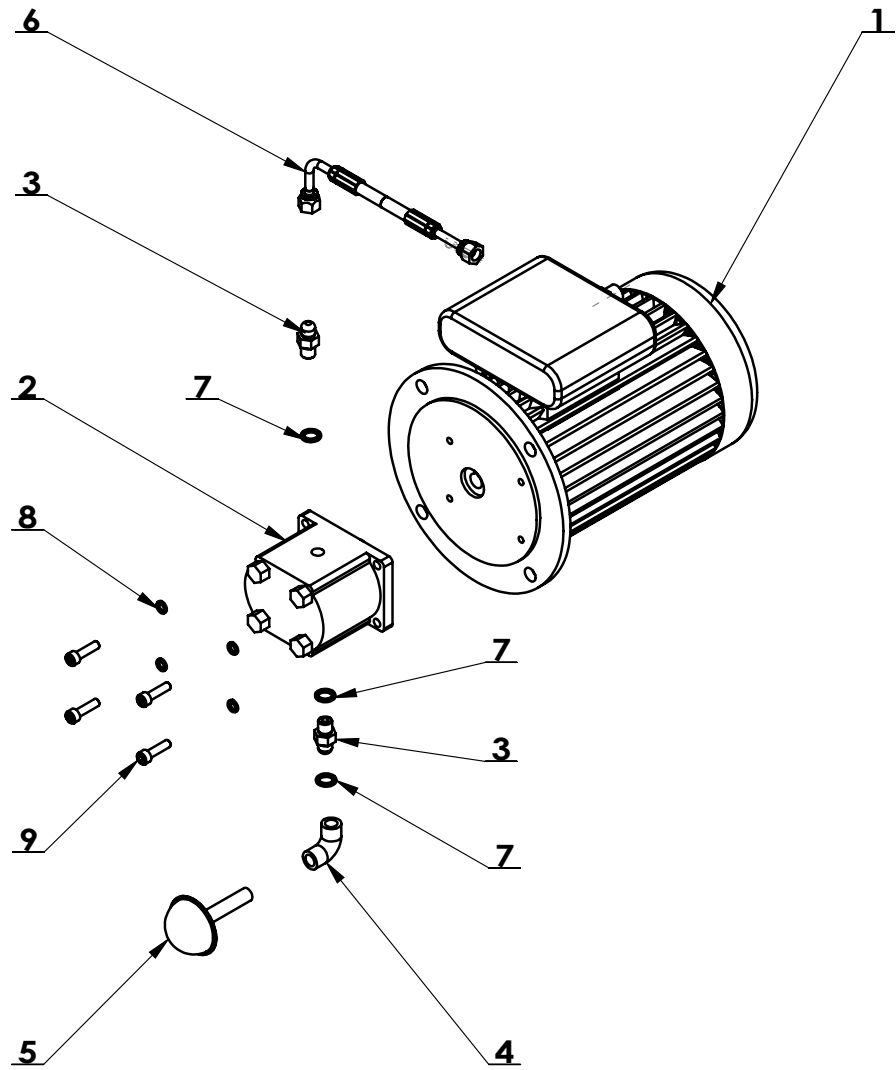


ITEM	PART. No	DESCRIPTION.	QT. Y
1	TC-17-1941100	PUMP STATION TANK	1
2	TC-17-1941200C	MOTOR OIL PUMP ASSEMBLY (3.0KW/240V/50HZ/1P)	1
3	GB41-M14	HEXANGULAR NUT	4
4	GB95-14	FLAT WASHER	4
5	GB93-14	STANDARD SPRING WASHER	4
6	GB5781-M14×35	HEXANGULAR BOLT	4

TC-17-1941100

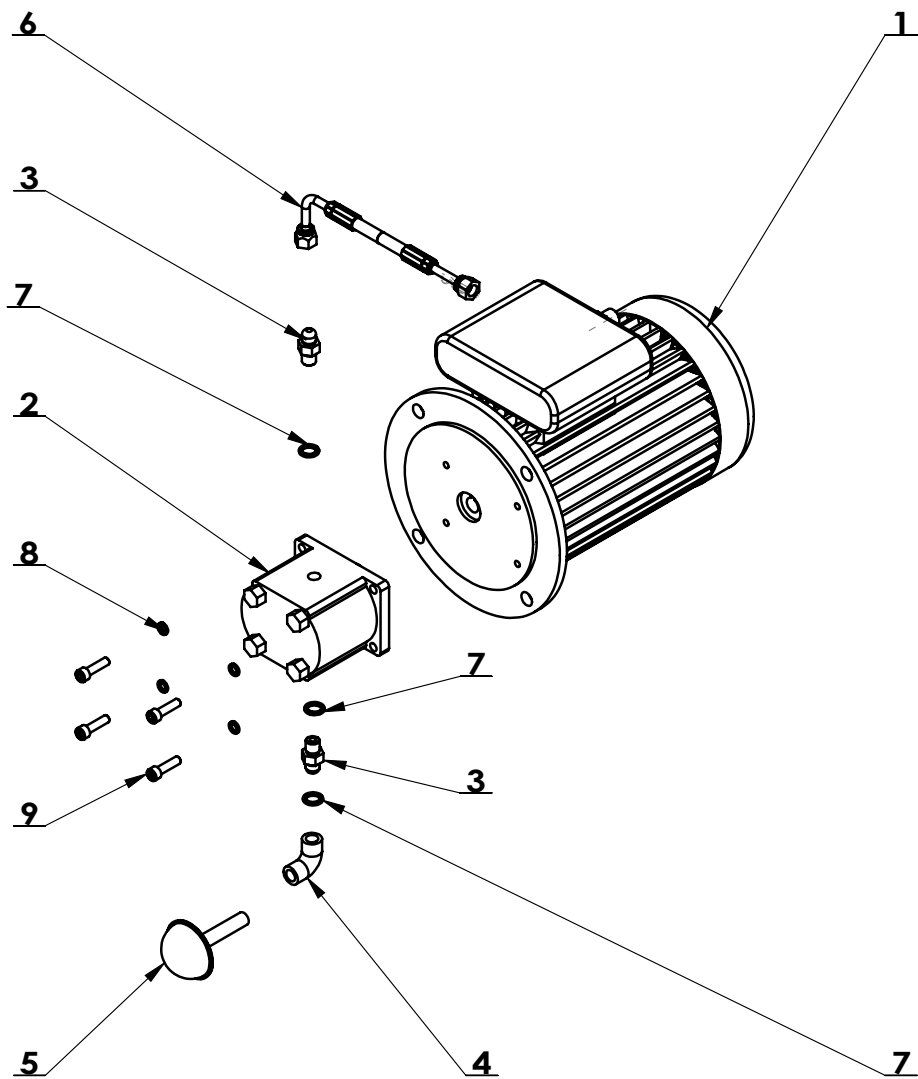


ITEM	PART. No	DESCRIPTION.	QT. Y
1	TC-17-19411H00	OIL TANK WELDING	1
2	TC-17-19411G00	CAP	1
3	TC-17-1941101	FUEL TANK GASKET	1
4	TC-17-1941102	OIL LEVEL DISPLAY WINDOW	1
5	TC-17-1941103	SOFT TUBING	1
6	TC-17-1941104	LOCK COVER	1
7	TC-10-1620001	OIL PIPE DOUBLE SCREW ROD	1
8	TC-10-1620002	NUT-LOCK	1
9	TC-10-1620005	OIL ROUTE DOUBLE SCREW ROD	3
10	TC-10-1620006	CLAMP BUSHING	1
11	JB982-14	SEALING COMPOUND	5
12	GB / T14626 M14×1.5	SCREWED PLUG M14×1.5	1
13	GB93-8	STANDARD SPRING WASHER	10
14	GB70. 1-M8×16	INNER HEXA CYLINDRICAL SCREW	10

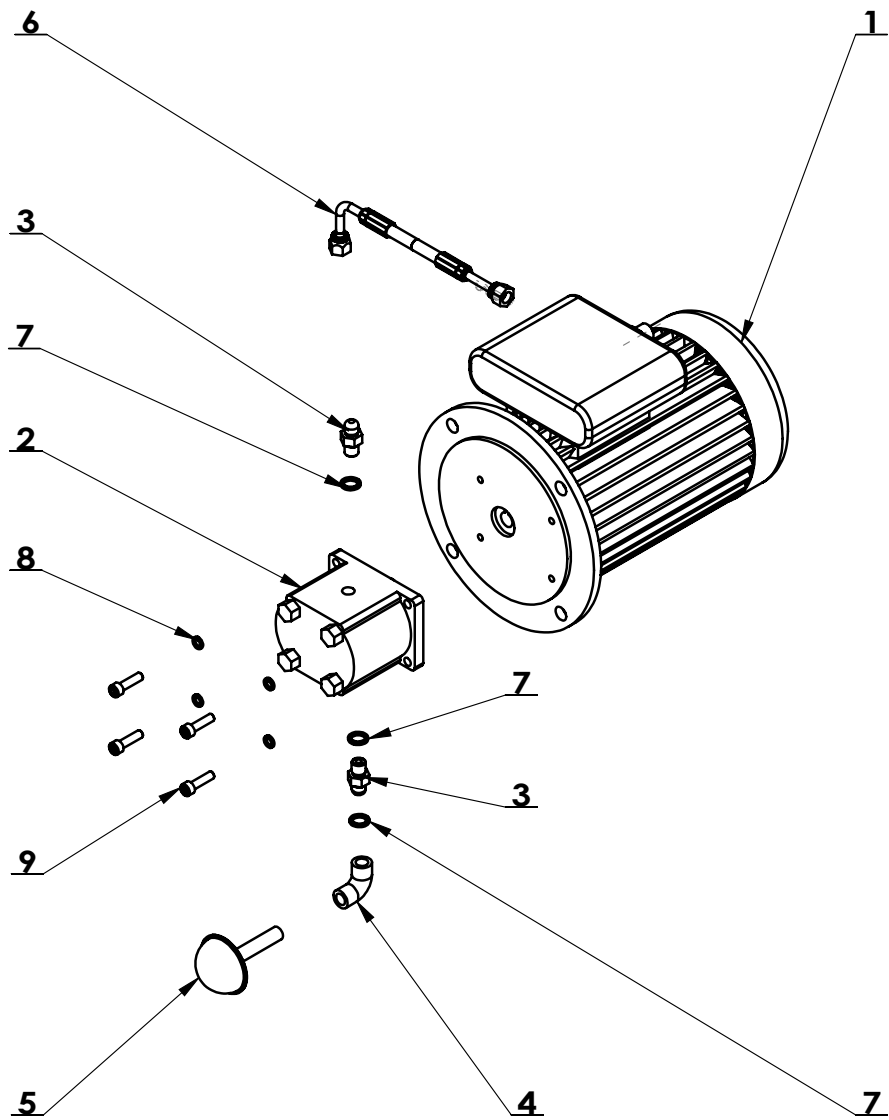


ITEM	PART. No	DESCRIPTION.	QT. Y
1	TC-17-1941201	585 HYDRAULIC STATION MOTOR (3.0KW/380~415V/50~60HZ/3P)	1
2	TC-17-1941202	585 OIL PUMP	1
3	TC-10-1620005	OIL ROUTE DOUBLE SCREW ROD	2
4	TC-17-1941203	ELBOW	1
5	TC-17-1941204	FILTER	1
6	YG-1300400	PRESSURE GAUGE TUBING	1
7	JB982-14	SEALING COMPOUND	3
8	GB93-8	STANDARD SPRING WASHER	4
9	GB70. 1-M8×30	INNER HEXA CYLINDRICAL SCREW	4

TC-17-1941200A

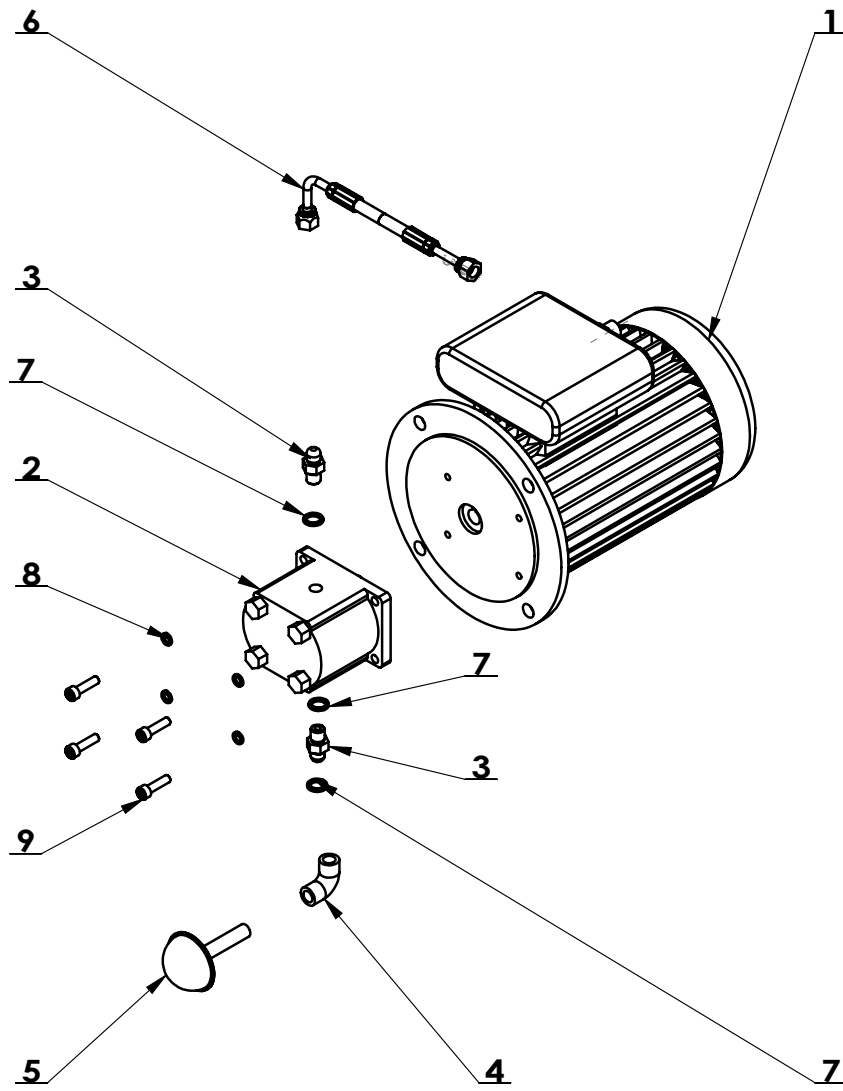


ITEM	PART. No	DESCRIPTION.	QT. Y
1	TC-17-1941201A	585 HYDRAULIC STATION MOTOR(3.0KW/220V/50HZ/1P)	1
2	TC-17-1941202	585 OIL PUMP	1
3	TC-10-1620005	OIL ROUTE DOUBLE SCREW ROD	2
4	TC-17-1941203	ELBOW	1
5	TC-17-1941204	FILTER	1
6	YG-1300400	PRESSURE GAUGE TUBING	1
7	JB982-14	SEALING COMPOUND	3
8	GB93-8	STANDARD SPRING WASHER	4
9	GB70.1-M8×30	INNER HEXA CYLINDRICAL SCREW	4

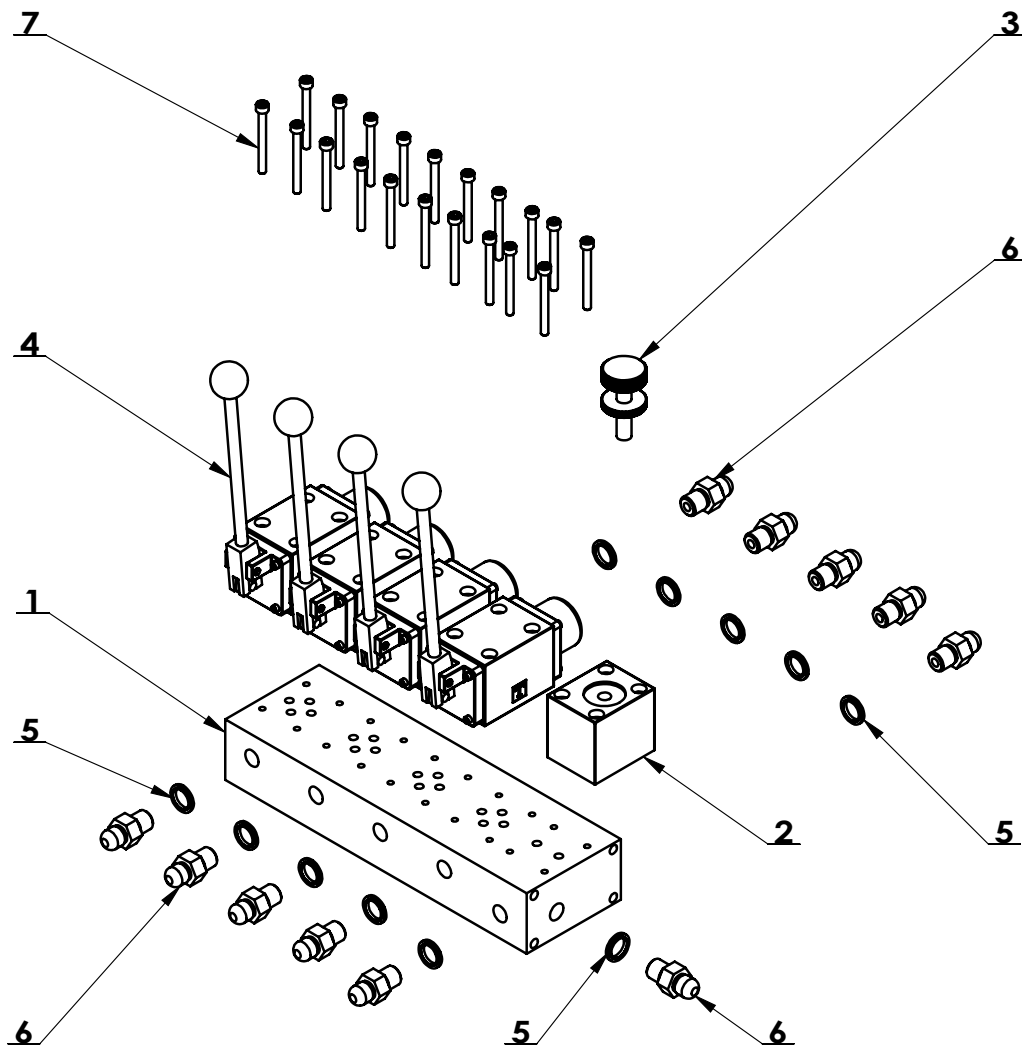


ITEM	PART. No	DESCRIPTION.	QT. Y
1	TC-17-1941201B	585 HYDRAULIC STATION MOTOR (3.0KW/220V/60HZ/1P)	1
2	TC-17-1941202	585 OIL PUMP	1
3	TC-10-1620005	OIL ROUTE DOUBLE SCREW ROD	2
4	TC-17-1941203	ELBOW	1
5	TC-17-1941204	FILTER	1
6	YG-1300400	PRESSURE GAUGE TUBING	1
7	JB982-14	SEALING COMPOUND	3
8	GB93-8	STANDARD SPRING WASHER	4
9	GB70.1-M8×30	INNER HEXA CYLINDRICAL SCREW	4

TC-17-1941200C

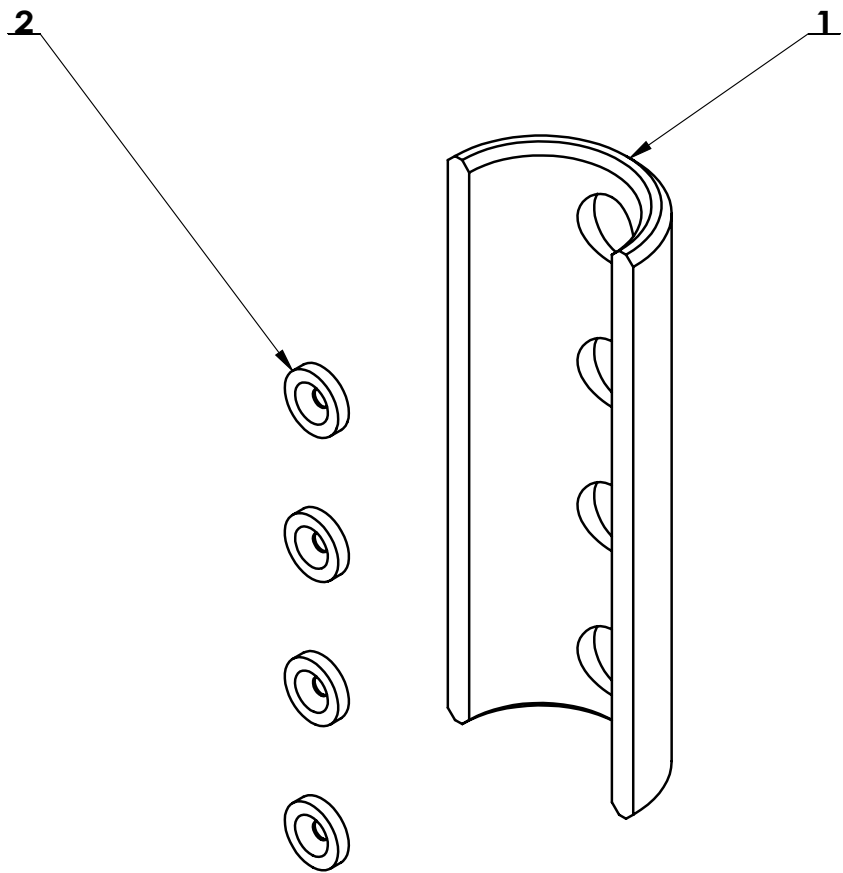


ITEM	PART. No	DESCRIPTION.	QT. Y
1	TC-17-1941201C	585 HYDRAULIC STATION MOTOR (3.0KW/240V/50HZ/1P)	1
2	TC-17-1941202	585 OIL PUMP	1
3	TC-10-1620005	OIL ROUTE DOUBLE SCREW ROD	2
4	TC-17-1941203	ELBOW	1
5	TC-17-1941204	FILTER	1
6	YG-1300400	PRESSURE GAUGE TUBING	1
7	JB982-14	SEALING COMPOUND	3
8	GB93-8	STANDARD SPRING WASHER	4
9	GB70. 1-M8×30	INNER HEXA CYLINDRICAL SCREW	4



ITEM	PART. No	DESCRIPTION.	QT. Y
1	TC-17-1942001	VALVE PLATE	1
2	TC-17-1942002	PRESSURE REGULATING VALVE BLOCK	1
3	TC-17-1942003	THE PRESSURE REGULATING VALVE	1
4	DMG-02-3C6-W	HAND OPERATED VALVE	4
5	JB982-14	SEALING COMPOUND	11
6	TC-10-1620005	OIL ROUTE DOUBLE SCREW ROD	11
7	GB70. 1-M5×50	INNER HEXA CYLINDRICAL SCREW	20

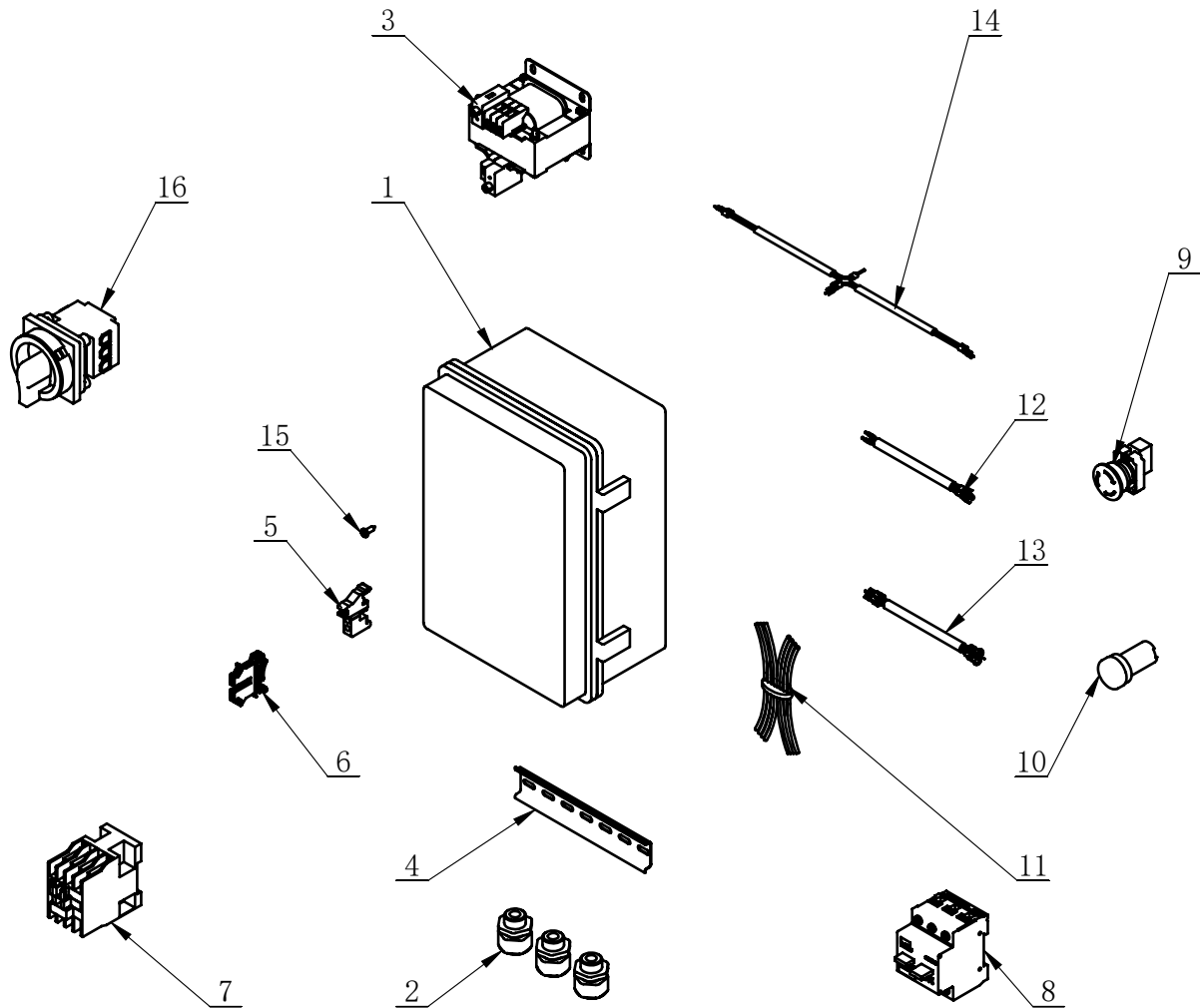
TC-17-1A00000



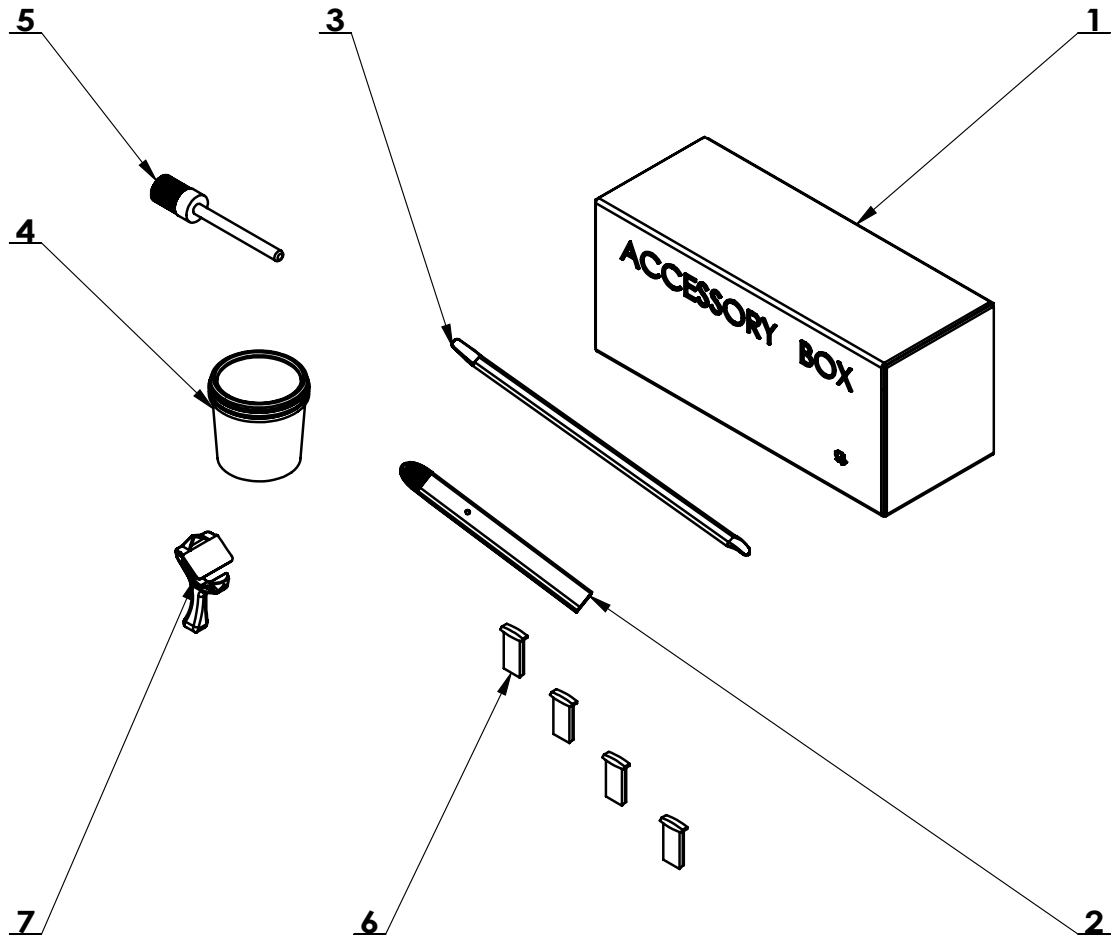
ITEM	PART. No	DESCRIPTION.	QT. Y
1	TC-17-1A00001	BAFFLE	1
2	MH-19-2000030	COUNTERSUNK HOLE CIRCULAR MAGNET	4



TC-17-2032380



ITEM	PART. No	DESCRIPTION.	QT. Y
1	TC-E-X203013	WATERPROOF BOX	1
2	TC-E-7700020	CABLE LOCK M20X1.5	3
3	TC-E-3623401	50W TRANSFORMER	1
4	TC-E-7363517	GUIDE RAIL 35MM /170MM	1
5	TC-E-5130000	RETAINING CLIP	2
6	TC-E-5120025	GROUND TERMINAL	2
7	TC-E-4280124	AC CONTACTOR	1
8	TC-E-4110810	AIR CIRCUIT BREAKER	1
9	TC-40-1800015	ABRUPT STOP SWITCH	1
10	TC-E-7202401	ELECTRICAL SUPPLY INDICATING LIGHT	1
11	TC-17-1951005	ELECTRIC CONTROL BOX WIRING HARNESS	1
12	TC-E-1204460	POWER WIRE	1
13	TC-E1204511	MOTOR WIRE	1
14	TC-E-1314210	OPERATING WIRE	1
15	GB845-ST4. 2X13 H	CROSS RECESSED PAN HEAD TAPPING SCREWS	6
16	J101-1512500	SWITCH 32A	1



ITEM	PART. No	DESCRIPTION.	QT. Y
1	C-54-8000002	ACCESSORY BOX	1
2	TC-40-8000006	24INCH CROWBAR	1
3	TC-10-6000001	24" CROWBAR	1
4	C-54-8100000	GREASE CONTAINER	1
5	C-54-8000014BP	HIGH-GRADE BRUSH	1
6	TC-17-1210007	CLAMP COVER	4
7	TC-17-8000003	CARD PLIERS	1